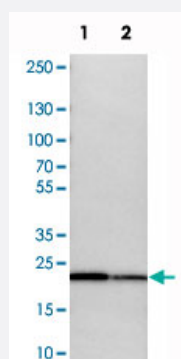


SPCS2 polyclonal antibody

Catalog # PAB20654 Size 100 uL

Applications

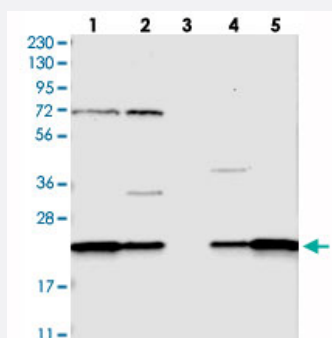


Western Blot (Cell lysate)

Western blot analysis of cell lysates with SPCS2 polyclonal antibody (Cat # PAB20654) at 1:250-1:500 dilution.

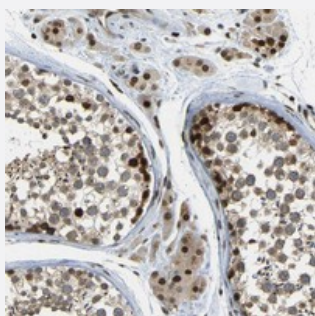
Lane 1 : NIH/3T3

Lane 2 : NBT-II



Western Blot

Western blot analysis of Lane 1: RT-4, Lane 2: U-251 MG, Lane 3: Human Plasma, Lane 4: Liver, Lane 5: Tonsil with SPCS2 polyclonal antibody (Cat # PAB20654) at 1:250-1:500 dilution.



Immunohistochemistry (Formalin/PFA-fixed paraffin-embedded sections)

Immunohistochemical staining of human testis with SPCS2 polyclonal antibody (Cat # PAB20654) shows strong nuclear and cytoplasmic positivity in Leydig cells and cells in seminiferous ducts at 1:50-1:200 dilution.

Specification

Product Description

Rabbit polyclonal antibody raised against recombinant SPCS2.

Immunogen	Recombinant protein corresponding to amino acids of human SPCS2.
Sequence	AAAAVQGGRSGGSGGCSGAGGASNCGTGSGRSGLLDKWKIDDKPKVKIDKWDGSAVKNSLDDSAK
Host	Rabbit
Reactivity	Human, Mouse, Rat
Form	Liquid
Purification	Antigen affinity purification
Isotype	IgG
Recommend Usage	Immunohistochemistry (1:50-1:200) Western Blot (1:250-1:500) The optimal working dilution should be determined by the end user.
Storage Buffer	In PBS, pH 7.2 (40% glycerol, 0.02% sodium azide)
Storage Instruction	Store at 4°C. For long term storage store at -20°C. Aliquot to avoid repeated freezing and thawing.
Note	This product contains sodium azide: a POISONOUS AND HAZARDOUS SUBSTANCE which should be handled by trained staff only.

Applications

- Western Blot (Cell lysate)

Western blot analysis of cell lysates with SPCS2 polyclonal antibody (Cat # PAB20654) at 1:250-1:500 dilution.

Lane 1 : NIH/3T3

Lane 2 : NBT-II

- Western Blot

Western blot analysis of Lane 1: RT-4, Lane 2: U-251 MG, Lane 3: Human Plasma, Lane 4: Liver, Lane 5: Tonsil with SPCS2 polyclonal antibody (Cat # PAB20654) at 1:250-1:500 dilution.

- Immunohistochemistry (Formalin/PFA-fixed paraffin-embedded sections)

Immunohistochemical staining of human testis with SPCS2 polyclonal antibody (Cat # PAB20654) shows strong nuclear and cytoplasmic positivity in Leydig cells and cells in seminiferous ducts at 1:50-1:200 dilution.

Gene Info — SPCS2

Entrez GeneID

[9789](#)

Protein Accession#	Q15005
Gene Name	SPCS2
Gene Alias	KIAA0102, MGC117366
Gene Description	signal peptidase complex subunit 2 homolog (S. cerevisiae)
Gene Ontology	Hyperlink
Other Designations	signal peptidase 25kDa subunit signal peptidase complex subunit 2 homolog