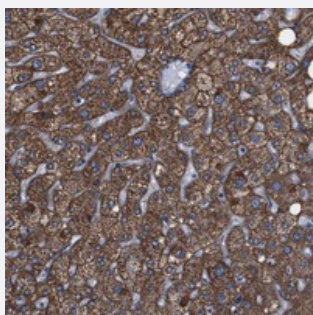


GGT7 polyclonal antibody

Catalog # PAB20645 Size 100 uL

Applications



Immunohistochemistry (Formalin/PFA-fixed paraffin-embedded sections)

Immunohistochemical staining of human liver with GGT7 polyclonal antibody (Cat # PAB20645) shows strong cytoplasmic positivity in hepatocytes.

Specification

Product Description	Rabbit polyclonal antibody raised against recombinant GGT7.
Immunogen	Recombinant protein corresponding to amino acids of human GGT7.
Sequence	HLVLSPPPPHTGPALISALNILEGFNLTSLVSREQALHWVAETLKIALALASRLGDPVYDSTITESMD DMLSKVEAAAYLRGHINDSQAAPAPLLPVYELDGAPTAAQVLIMGPDDFVAMVSSLNQPFGLIT PSGILLNS
Host	Rabbit
Reactivity	Human
Form	Liquid
Purification	Antigen affinity purification
Isotype	IgG
Recommend Usage	Immunohistochemistry (1:50-1:200) Western Blot (1:250-1:500) The optimal working dilution should be determined by the end user.
Storage Buffer	In PBS, pH 7.2 (40% glycerol, 0.02% sodium azide)

Storage Instruction

Store at 4°C. For long term storage store at -20°C.
Aliquot to avoid repeated freezing and thawing.

Note

This product contains sodium azide: a POISONOUS AND HAZARDOUS SUBSTANCE which should be handled by trained staff only.

Applications

- Western Blot
- Immunohistochemistry (Formalin/PFA-fixed paraffin-embedded sections)

Immunohistochemical staining of human liver with GGT7 polyclonal antibody (Cat # PAB20645) shows strong cytoplasmic positivity in hepatocytes.

Gene Info — GGT7

Entrez GeneID[2686](#)**Protein Accession#**[Q9UJ14](#)**Gene Name**

GGT7

Gene Alias

D20S101, GGT4, GGTL3, GGTL5, dJ18C9.2

Gene Description

gamma-glutamyltransferase 7

Gene Ontology[Hyperlink](#)**Gene Summary**

This gene is a member of a gene family that encodes enzymes involved in both the metabolism of glutathione and in the transpeptidation of amino acids. Changes in the activity of gamma-glutamyltransferase may signal preneoplastic or toxic conditions in the liver or kidney. The protein encoded by this gene consists of a heavy and a light chain, and it can interact with CT120, a plasma membrane-associated protein that is possibly involved in lung carcinogenesis. [provided by RefSeq]

Other Designations

gamma-glutamyltransferase 4|gamma-glutamyltransferase-like 3|gamma-glutamyltransferase-like 5|gamma-glutamyltranspeptidase-like 3

Pathway

- [Arachidonic acid metabolism](#)
- [Cyanoamino acid metabolism](#)

- [Glutathione metabolism](#)
- [Metabolic pathways](#)
- [Selenoamino acid metabolism](#)
- [Taurine and hypotaurine metabolism](#)

Disease

- [Tobacco Use Disorder](#)