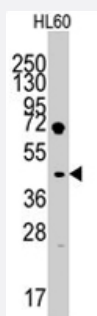


# LEFTY1 polyclonal antibody

Catalog # PAB2064

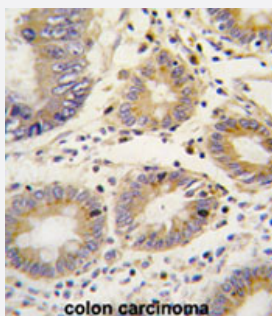
Size 400 uL

## Applications



### Western Blot (Cell lysate)

Western blot analysis of LEFTY1 polyclonal antibody (Cat # PAB2064) in HL-60 cell line lysates (35 ug/lane). LEFTY1 (arrow) was detected using the purified Polyclonal antibody.



### Immunohistochemistry (Formalin/PFA-fixed paraffin-embedded sections)

Formalin-fixed and paraffin-embedded human colon carcinoma reacted with LEFTY1 polyclonal antibody (Cat # PAB2064), which was peroxidase-conjugated to the secondary antibody, followed by AEC staining. This data demonstrates the use of this antibody for immunohistochemistry; clinical relevance has not been evaluated.

## Specification

<b>Product Description</b>	Rabbit polyclonal antibody raised against synthetic peptide of LEFTY1.
<b>Immunogen</b>	A synthetic peptide (conjugated with KLH) corresponding to amino acids 291-320 at C-terminus of human LEFTY1.
<b>Host</b>	Rabbit
<b>Reactivity</b>	Human
<b>Form</b>	Liquid
<b>Purification</b>	Ammonium sulfate precipitation

Recommend Usage	Western Blot (1:1000) Immunohistochemistry (1:10-50) The optimal working dilution should be determined by the end user.
Storage Buffer	In PBS (0.09% sodium azide)
Storage Instruction	Store at 4°C. For long term storage store at -20°C. Aliquot to avoid repeated freezing and thawing.
Note	This product contains sodium azide: a POISONOUS AND HAZARDOUS SUBSTANCE which should be handled by trained staff only.

## Applications

- Western Blot (Cell lysate)

Western blot analysis of LEFTY1 polyclonal antibody (Cat # PAB2064) in HL-60 cell line lysates (35 ug/lane). LEFTY1 (arrow) was detected using the purified Polyclonal antibody.

- Immunohistochemistry (Formalin/PFA-fixed paraffin-embedded sections)

Formalin-fixed and paraffin-embedded human colon carcinoma reacted with LEFTY1 polyclonal antibody (Cat # PAB2064), which was peroxidase-conjugated to the secondary antibody, followed by AEC staining.

This data demonstrates the use of this antibody for immunohistochemistry; clinical relevance has not been evaluated.

## Gene Info — LEFTY1

Entrez GeneID	<a href="#">10637</a>
Protein Accession#	<a href="#">NP_066277;O75610</a>
Gene Name	LEFTY1
Gene Alias	LEFTB, LEFTYB
Gene Description	left-right determination factor 1
Omim ID	<a href="#">603037</a>
Gene Ontology	<a href="#">Hyperlink</a>
Gene Summary	This gene encodes a member of the TGF-beta family of proteins. A similar secreted protein in mouse plays a role in left-right asymmetry determination of organ systems during development. Alternative processing of this protein can yield three different products. This gene is closely linked to both a related family member and a related pseudogene. [provided by RefSeq]
Other Designations	OTTHUMP00000035572 left-right determination, factor B

## Publication Reference

- [Molecular analysis of LEFTY-expressing cells in early human embryoid bodies.](#)

Dvash T, Sharon N, Yanuka O, Benvenisty N.

Stem Cells 2007 Feb; 25(2):465.

Application: IF, Human, Human embryonic stem cells

- [Expression of nodal, lefty-a, and lefty-B in undifferentiated human embryonic stem cells requires activation of Smad2/3.](#)

Besser D.

The Journal of Biological Chemistry 2004 Oct; 279(43):45076.

- [Characterization and mutation analysis of human LEFTY A and LEFTY B, homologues of murine genes implicated in left-right axis development.](#)

Kosaki K, Bassi MT, Kosaki R, Lewin M, Belmont J, Schauer G, Casey B.

American Journal of Human Genetics 1999 Mar; 64(3):712.

## Pathway

- [TGF-beta signaling pathway](#)

## Disease

- [Cardiovascular Diseases](#)
- [Diabetes Mellitus](#)
- [Disease Progression](#)
- [Disease Susceptibility](#)
- [Edema](#)
- [Genetic Predisposition to Disease](#)
- [HIV Infections](#)
- [Obesity](#)
- [Ovarian Failure](#)

- [Polycystic Ovary Syndrome](#)
- [Puberty](#)
- [Thrombophilia](#)
- [Tobacco Use Disorder](#)