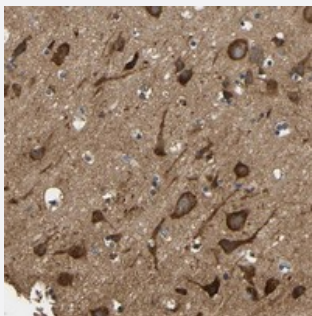


# LRRCC1 polyclonal antibody

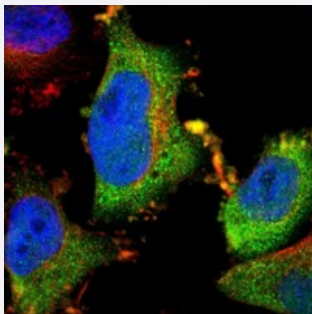
Catalog # PAB20635      Size 100 uL

## Applications



### Immunohistochemistry (Formalin/PFA-fixed paraffin-embedded sections)

Immunohistochemical staining of human cerebral cortex with LRRCC1 polyclonal antibody (Cat # PAB20635) shows strong cytoplasmic positivity in neuronal cells.



### Immunofluorescence

Immunofluorescent staining of human cell line U-251 MG with LRRCC1 polyclonal antibody (Cat # PAB20635) at 1-4 ug/mL dilution shows positivity in cytoplasm.

## Specification

Product Description	Rabbit polyclonal antibody raised against recombinant LRRCC1.
Immunogen	Recombinant protein corresponding to amino acids of human LRRCC1.
Sequence	EYQEKIDVLSQQYMDLENEFRIALTVEARRFQDVKDGFEENVATELAKSKHALIWAQRKENESSLI KDLTCMVKEQKTKLAEVSKLKQETAANLQNQINTL
Host	Rabbit
Reactivity	Human
Form	Liquid

<b>Purification</b>	Antigen affinity purification
<b>Isotype</b>	IgG
<b>Recommend Usage</b>	Immunohistochemistry (1:50-1:200) Immunofluorescence (1-4 ug/mL) The optimal working dilution should be determined by the end user.
<b>Storage Buffer</b>	In PBS, pH 7.2 (40% glycerol, 0.02% sodium azide)
<b>Storage Instruction</b>	Store at 4°C. For long term storage store at -20°C. Aliquot to avoid repeated freezing and thawing.
<b>Note</b>	This product contains sodium azide: a POISONOUS AND HAZARDOUS SUBSTANCE which should be handled by trained staff only.

## Applications

- Immunohistochemistry (Formalin/PFA-fixed paraffin-embedded sections)

Immunohistochemical staining of human cerebral cortex with LRRCC1 polyclonal antibody (Cat # PAB20635) shows strong cytoplasmic positivity in neuronal cells.

- Immunofluorescence

Immunofluorescent staining of human cell line U-251 MG with LRRCC1 polyclonal antibody (Cat # PAB20635) at 1-4 ug/mL dilution shows positivity in cytoplasm.

## Gene Info — LRRCC1

<b>Entrez GeneID</b>	<a href="#">85444</a>
<b>Protein Accession#</b>	<a href="#">Q9C099</a>
<b>Gene Name</b>	LRRCC1
<b>Gene Alias</b>	Clerc, KIAA1764, SAP2
<b>Gene Description</b>	leucine rich repeat and coiled-coil domain containing 1
<b>Gene Ontology</b>	<a href="#">Hyperlink</a>
<b>Other Designations</b>	sodium channel associated protein 2