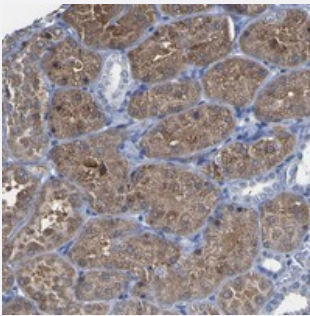


C19orf26 polyclonal antibody

Catalog # PAB20621 Size 100 uL

Applications



Immunohistochemistry (Formalin/PFA-fixed paraffin-embedded sections)

Immunohistochemical staining of human kidney with C19orf26 polyclonal antibody (Cat # PAB20621) shows cytoplasmic positivity in cells in tubules.

Specification

Product Description	Rabbit polyclonal antibody raised against recombinant C19orf26.
Immunogen	Recombinant protein corresponding to amino acids of human C19orf26.
Sequence	VHQLNRAMEEAEKTTTTYLDNGTHPAQDPDFRGEDPECQDAETERFLSTSSTGRRVSFNEAAL FEQSRKTQDKGRRYTLTEGDFHHLKNARLTHLHLPPLKIVTIHECD
Host	Rabbit
Reactivity	Human
Form	Liquid
Purification	Antigen affinity purification
Isotype	IgG
Recommend Usage	Immunohistochemistry (1:50-1:200) The optimal working dilution should be determined by the end user.
Storage Buffer	In PBS, pH 7.2 (40% glycerol, 0.02% sodium azide)

Storage Instruction

Store at 4°C. For long term storage store at -20°C.
Aliquot to avoid repeated freezing and thawing.

Note

This product contains sodium azide: a POISONOUS AND HAZARDOUS SUBSTANCE which should be handled by trained staff only.

Applications

- Immunohistochemistry (Formalin/PFA-fixed paraffin-embedded sections)

Immunohistochemical staining of human kidney with C19orf26 polyclonal antibody (Cat # PAB20621) shows cytoplasmic positivity in cells in tubules.

Gene Info — C19orf26

Entrez GeneID[255057](#)**Protein Accession#**[Q8N350](#)**Gene Name**

C19orf26

Gene Alias

DOS, MGC40084

Gene Description

chromosome 19 open reading frame 26

Gene Ontology[Hyperlink](#)**Other Designations**

downstream of Stk11