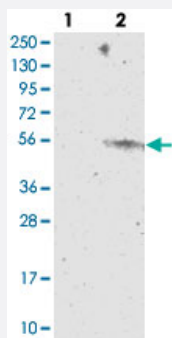


CYP2W1 polyclonal antibody

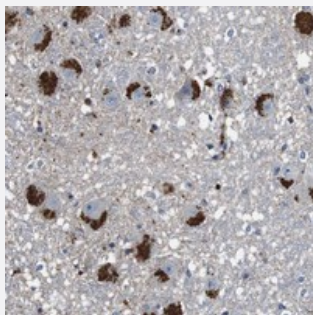
Catalog # PAB20619 Size 100 uL

Applications



Western Blot (Transfected lysate)

Western blot analysis of Lane 1: Negative control (vector only transfected HEK293T lysate), Lane 2: Over-expression Lysate (Co-expressed with a C-terminal myc-DDK tag (~3.1 kDa) in mammalian HEK293T cells with CYP2W1 polyclonal antibody (Cat # PAB20619).



Immunohistochemistry (Formalin/PFA-fixed paraffin-embedded sections)

Immunohistochemical staining of human hippocampus with CYP2W1 polyclonal antibody (Cat # PAB20619) shows strong cytoplasmic positivity, with a granular pattern, in neuronal and glial cells.

Specification

Product Description	Rabbit polyclonal antibody raised against recombinant CYP2W1.
Immunogen	Recombinant protein corresponding to amino acids of human CYP2W1.
Sequence	VLTGFEAVKEALAGPGQELADRPPIAIFQLIQRGGGIFSSGARWRAARQFTVRALHSLGVGREPV ADKILQELKCLSGQLDGYRGRPFPLALLGWAPSNITFALLFGRRFDYRDPVFVSLLG
Host	Rabbit
Reactivity	Human
Form	Liquid

Purification	Antigen affinity purification
Isotype	IgG
Recommend Usage	Western Blot (1:250-1:500) The optimal working dilution should be determined by the end user.
Storage Buffer	In PBS, pH 7.2 (40% glycerol, 0.02% sodium azide)
Storage Instruction	Store at 4°C. For long term storage store at -20°C. Aliquot to avoid repeated freezing and thawing.
Note	This product contains sodium azide: a POISONOUS AND HAZARDOUS SUBSTANCE which should be handled by trained staff only.

Applications

- Western Blot (Transfected lysate)

Western blot analysis of Lane 1: Negative control (vector only transfected HEK293T lysate), Lane 2: Over-expression Lysate (Co-expressed with a C-terminal myc-DDK tag (~3.1 kDa) in mammalian HEK293T cells with CYP2W1 polyclonal antibody (Cat # PAB20619).

- Immunohistochemistry (Formalin/PFA-fixed paraffin-embedded sections)

Immunohistochemical staining of human hippocampus with CYP2W1 polyclonal antibody (Cat # PAB20619) shows strong cytoplasmic positivity, with a granular pattern, in neuronal and glial cells.

Gene Info — CYP2W1

Entrez GeneID	54905
Protein Accession#	Q8TAV3
Gene Name	CYP2W1
Gene Alias	MGC34287
Gene Description	cytochrome P450, family 2, subfamily W, polypeptide 1
Gene Ontology	Hyperlink
Gene Summary	This gene encodes a member of the cytochrome P450 superfamily of enzymes. The cytochrome P450 proteins are monooxygenases which catalyze many reactions involved in drug metabolism and synthesis of cholesterol, steroids and other lipids. [provided by RefSeq]
Other Designations	-

Disease

- [Colon cancer](#)
- [Colorectal Neoplasms](#)