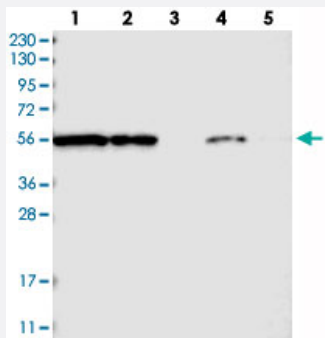


# FKBP9 polyclonal antibody

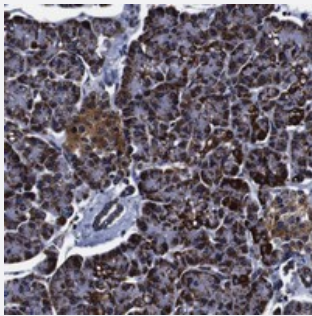
Catalog # PAB20604      Size 100 uL

## Applications



### Western Blot

Western blot analysis of Lane 1: RT-4, Lane 2: U-251 MG, Lane 3: Human Plasma, Lane 4: Liver, Lane 5: Tonsil with FKBP9 polyclonal antibody (Cat # PAB20604) at 1:250-1:500 dilution.



### Immunohistochemistry (Formalin/PFA-fixed paraffin-embedded sections)

Immunohistochemical staining of human pancreas with FKBP9 polyclonal antibody (Cat # PAB20604) shows strong cytoplasmic positivity in exocrine glandular cells at 1:50-1:200 dilution.

## Specification

Product Description	Rabbit polyclonal antibody raised against recombinant FKBP9.
Immunogen	Recombinant protein corresponding to amino acids of human FKBP9.
Sequence	TGMDQALVGMCVNERRFVKIPPKLAYGNEGVSGVIPNSVLHFDVLLMDIWNSEDQVQIHTYFKP PSCPRTIQVSDF
Host	Rabbit
Reactivity	Human
Form	Liquid

Purification	Antigen affinity purification
Isotype	IgG
Recommend Usage	Immunohistochemistry (1:50-1:200) Western Blot (1:250-1:500) The optimal working dilution should be determined by the end user.
Storage Buffer	In PBS, pH 7.2 (40% glycerol, 0.02% sodium azide)
Storage Instruction	Store at 4°C. For long term storage store at -20°C. Aliquot to avoid repeated freezing and thawing.
Note	This product contains sodium azide: a POISONOUS AND HAZARDOUS SUBSTANCE which should be handled by trained staff only.

## Applications

- Western Blot

Western blot analysis of Lane 1: RT-4, Lane 2: U-251 MG, Lane 3: Human Plasma, Lane 4: Liver, Lane 5: Tonsil with FKBP9 polyclonal antibody (Cat # PAB20604) at 1:250-1:500 dilution.

- Immunohistochemistry (Formalin/PFA-fixed paraffin-embedded sections)

Immunohistochemical staining of human pancreas with FKBP9 polyclonal antibody (Cat # PAB20604) shows strong cytoplasmic positivity in exocrine glandular cells at 1:50-1:200 dilution.

## Gene Info — FKBP9

Entrez GeneID	<a href="#">11328</a>
Protein Accession#	<a href="#">O95302</a>
Gene Name	FKBP9
Gene Alias	DKFZp586B1723, FKBP60, FKBP63, MGC126772, MGC138258, PPlase
Gene Description	FK506 binding protein 9, 63 kDa
Gene Ontology	<a href="#">Hyperlink</a>
Gene Summary	O
Other Designations	FK506 binding protein 9 peptidyl-prolyl cis-trans isomerase rotamase