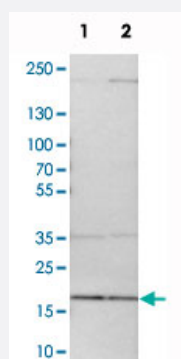


MRPL52 polyclonal antibody

Catalog # PAB20595 Size 100 uL

Applications

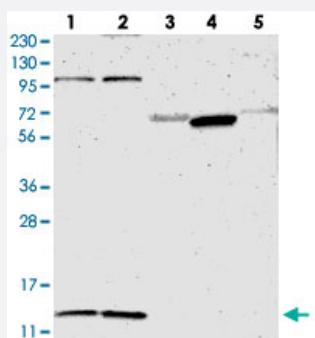


Western Blot (Cell lysate)

Western blot analysis of cell lysates with MRPL52 polyclonal antibody (Cat # PAB20595) at 1:250-1:500 dilution.

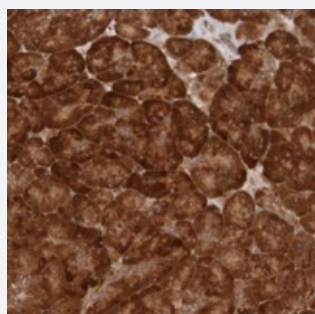
Lane 1 : NIH/3T3

Lane 2 : NBT-II



Western Blot

Western blot analysis of Lane 1: RT-4, Lane 2: U-251 MG, Lane 3: Human Plasma, Lane 4: Liver, Lane 5: Tonsil with MRPL52 polyclonal antibody (Cat # PAB20595) at 1:250-1:500 dilution.



Immunohistochemistry (Formalin/PFA-fixed paraffin-embedded sections)

Immunohistochemical staining of human pancreas with MRPL52 polyclonal antibody (Cat # PAB20595) shows strong cytoplasmic positivity in exocrine glandular cells at 1:50-1:200 dilution.

Specification

Product Description

Rabbit polyclonal antibody raised against recombinant MRPL52.

Immunogen	Recombinant protein corresponding to amino acids of human MRPL52.
Sequence	QWRLQQGLAANPSGYGPLTELPDWSYADGRPAPPMKGQLRRKAERETFARRVVLLSQEMDAG LQAWQLRQQKLQEEQRKQENALKPKGASLKSPLPSQ
Host	Rabbit
Reactivity	Human, Mouse, Rat
Form	Liquid
Purification	Antigen affinity purification
Isotype	IgG
Recommend Usage	Immunohistochemistry (1:50-1:200) Western Blot (1:250-1:500) The optimal working dilution should be determined by the end user.
Storage Buffer	In PBS, pH 7.2 (40% glycerol, 0.02% sodium azide)
Storage Instruction	Store at 4°C. For long term storage store at -20°C. Aliquot to avoid repeated freezing and thawing.
Note	This product contains sodium azide: a POISONOUS AND HAZARDOUS SUBSTANCE which should be handled by trained staff only.

Applications

- Western Blot (Cell lysate)

Western blot analysis of cell lysates with MRPL52 polyclonal antibody (Cat # PAB20595) at 1:250-1:500 dilution.

Lane 1 : NIH/3T3

Lane 2 : NBT-II

- Western Blot

Western blot analysis of Lane 1: RT-4, Lane 2: U-251 MG, Lane 3: Human Plasma, Lane 4: Liver, Lane 5: Tonsil with MRPL52 polyclonal antibody (Cat # PAB20595) at 1:250-1:500 dilution.

- Immunohistochemistry (Formalin/PFA-fixed paraffin-embedded sections)

Immunohistochemical staining of human pancreas with MRPL52 polyclonal antibody (Cat # PAB20595) shows strong cytoplasmic positivity in exocrine glandular cells at 1:50-1:200 dilution.

Gene Info — MRPL52

Entrez GeneID

[122704](#)

Protein Accession#	Q86TS9
Gene Name	MRPL52
Gene Alias	-
Gene Description	mitochondrial ribosomal protein L52
Gene Ontology	Hyperlink
Gene Summary	<p>Mammalian mitochondrial ribosomal proteins are encoded by nuclear genes and help in protein synthesis within the mitochondrion. Mitochondrial ribosomes (mitoribosomes) consist of a small 28 S subunit and a large 39S subunit. They have an estimated 75% protein to rRNA composition compared to prokaryotic ribosomes, where this ratio is reversed. Another difference between mammalian mitoribosomes and prokaryotic ribosomes is that the latter contain a 5S rRNA. Among different species, the proteins comprising the mitoribosome differ greatly in sequence, and sometimes in biochemical properties, which prevents easy recognition by sequence homology. This gene encodes a 39S subunit protein which has no bacterial homolog. Multiple transcript variants encoding different protein isoforms were identified through sequence analysis. [provided by RefSeq]</p>
Other Designations	OTTHUMP00000164489