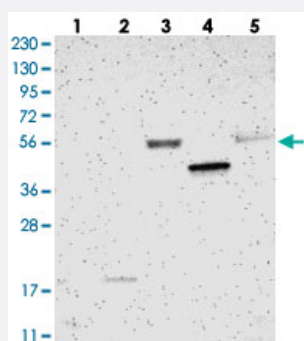


LILRB5 polyclonal antibody

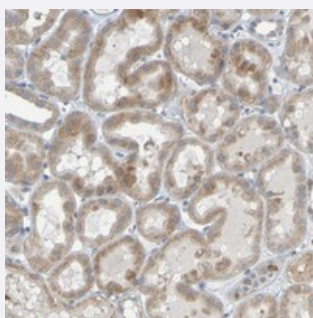
Catalog # PAB20582 Size 100 uL

Applications



Western Blot

Western blot analysis of Lane 1: RT-4, Lane 2: U-251 MG, Lane 3: Human Plasma, Lane 4: Liver, Lane 5: Tonsil with LILRB5 polyclonal antibody (Cat # PAB20582).



Immunohistochemistry (Formalin/PFA-fixed paraffin-embedded sections)

Immunohistochemical staining of human kidney with LILRB5 polyclonal antibody (Cat # PAB20582) shows moderate cytoplasmic positivity in tubular cells.

Specification

Product Description	Rabbit polyclonal antibody raised against recombinant LILRB5.
Immunogen	Recombinant protein corresponding to amino acids of human LILRB5.
Sequence	PKPTLWAEPASVIARGKPVTLCQGPLETEEYRLDKEGLPWARKRQNPLEPGAKAKFHIPSTVYDSAGRYRCYYETPAGWSEPSDPLELVATG
Host	Rabbit
Reactivity	Human
Form	Liquid

Purification	Antigen affinity purification
Isotype	IgG
Recommend Usage	Immunohistochemistry (1:20-1:50) Western Blot (1:250-1:500) The optimal working dilution should be determined by the end user.
Storage Buffer	In PBS, pH 7.2 (40% glycerol, 0.02% sodium azide)
Storage Instruction	Store at 4°C. For long term storage store at -20°C. Aliquot to avoid repeated freezing and thawing.
Note	This product contains sodium azide: a POISONOUS AND HAZARDOUS SUBSTANCE which should be handled by trained staff only.

Applications

- Western Blot

Western blot analysis of Lane 1: RT-4, Lane 2: U-251 MG, Lane 3: Human Plasma, Lane 4: Liver, Lane 5: Tonsil with LILRB5 polyclonal antibody (Cat # PAB20582).

- Immunohistochemistry (Formalin/PFA-fixed paraffin-embedded sections)

Immunohistochemical staining of human kidney with LILRB5 polyclonal antibody (Cat # PAB20582) shows moderate cytoplasmic positivity in tubular cells.

Gene Info — LILRB5

Entrez GeneID	10990
Protein Accession#	O75023
Gene Name	LILRB5
Gene Alias	CD85C, LIR-8, LIR8
Gene Description	leukocyte immunoglobulin-like receptor, subfamily B (with TM and ITIM domains), member 5
Omim ID	604814
Gene Ontology	Hyperlink

Gene Summary

This gene is a member of the leukocyte immunoglobulin-like receptor (LIR) family, which is found in a gene cluster at chromosomal region 19q13.4. The encoded protein belongs to the subfamily B class of LIR receptors which contain two or four extracellular immunoglobulin domains, a transmembrane domain, and two to four cytoplasmic immunoreceptor tyrosine-based inhibitory motifs (ITIMs). Several other LIR subfamily B receptors are expressed on immune cells where they bind to MHC class I molecules on antigen-presenting cells and inhibit stimulation of an immune response. Multiple transcript variants encoding different isoforms have been found for this gene. [provided by RefSeq]

Other Designations

leukocyte immunoglobulin-like receptor 8|leukocyte immunoglobulin-like receptor, subfamily B, member 5