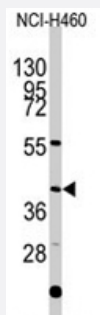


EN1 polyclonal antibody

Catalog # PAB2058

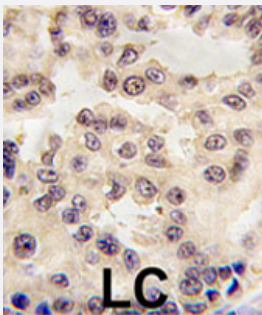
Size 200 uL

Applications



Western Blot (Cell lysate)

Western blot analysis of EN1 polyclonal antibody (Cat # PAB2058) in NCI-H460 cell line lysates (35 ug/lane). EN1 (arrow) was detected using the purified Polyclonal antibody.



Immunohistochemistry (Formalin/PFA-fixed paraffin-embedded sections)

Formalin-fixed and paraffin-embedded human lung carcinoma tissue reacted with EN1 polyclonal antibody (Cat # PAB2058), which was peroxidase-conjugated to the secondary antibody, followed by DAB staining. This data demonstrates the use of this antibody for immunohistochemistry; clinical relevance has not been evaluated.

Specification

Product Description	Rabbit polyclonal antibody raised against synthetic peptide of EN1.
Immunogen	A synthetic peptide (conjugated with KLH) corresponding to N-terminus of human EN1.
Host	Rabbit
Reactivity	Human
Form	Liquid
Purification	Protein A purification

Recommend Usage	Western Blot (1:1000) Immunohistochemistry (1:10-50) The optimal working dilution should be determined by the end user.
Storage Buffer	In PBS (0.09% sodium azide)
Storage Instruction	Store at 4°C. For long term storage store at -20°C. Aliquot to avoid repeated freezing and thawing.
Note	This product contains sodium azide: a POISONOUS AND HAZARDOUS SUBSTANCE which should be handled by trained staff only.

Applications

- Western Blot (Cell lysate)

Western blot analysis of EN1 polyclonal antibody (Cat # PAB2058) in NCI-H460 cell line lysates (35 ug/lane). EN1 (arrow) was detected using the purified Polyclonal antibody.

- Immunohistochemistry (Formalin/PFA-fixed paraffin-embedded sections)

Formalin-fixed and paraffin-embedded human lung carcinoma tissue reacted with EN1 polyclonal antibody (Cat # PAB2058), which was peroxidase-conjugated to the secondary antibody, followed by DAB staining.

This data demonstrates the use of this antibody for immunohistochemistry; clinical relevance has not been evaluated.

Gene Info — EN1

Entrez GeneID	2019
Protein Accession#	NP_001417;Q05925
Gene Name	EN1
Gene Alias	-
Gene Description	engrailed homeobox 1
Omim ID	131290
Gene Ontology	Hyperlink
Gene Summary	Homeobox-containing genes are thought to have a role in controlling development. In Drosophila, the 'engrailed' (en) gene plays an important role during development in segmentation, where it is required for the formation of posterior compartments. Different mutations in the mouse homologs, En1 and En2, produced different developmental defects that frequently are lethal. The human engrailed homologs 1 and 2 encode homeodomain-containing proteins and have been implicated in the control of pattern formation during development of the central nervous system. [provided by RefSeq]

Other Designations

OTTHUMP00000162091|engrailed homolog 1

Publication Reference

- [Engrailed-1 negatively regulates beta-catenin transcriptional activity by destabilizing beta-catenin via a glycogen synthase kinase-3beta-independent pathway.](#)

Bachar-Dahan L, Goltzmann J, Yaniv A, Gazit A.

Molecular Biology of the Cell 2006 Jun; 17(6):2572.

Application: WB-Tr, Human, HEK 293T cells

- [Regional assignment of the human homeobox-containing gene EN1 to chromosome 2q13-q21.](#)

Kohler A, Logan C, Joyner AL, Muenke M.

Genomics 1993 Jan; 15(1):233.

Disease

- [Cardiovascular Diseases](#)
- [Diabetes Mellitus](#)
- [Edema](#)
- [Mental Disorders](#)
- [Parkinson disease](#)
- [Schizophrenia](#)
- [Sudden Infant Death](#)