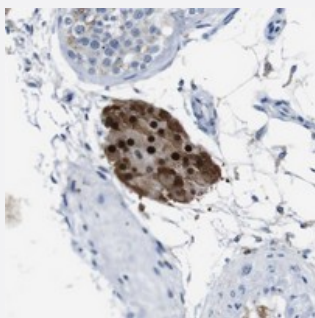


SLC2A8 polyclonal antibody

Catalog # PAB20570 Size 100 uL

Applications



Immunohistochemistry (Formalin/PFA-fixed paraffin-embedded sections)

Immunohistochemical staining of human testis with SLC2A8 polyclonal antibody (Cat # PAB20570) shows nuclear and cytoplasmic positivity in cells of seminiferous ducts at 1:10-1:20 dilution.

Specification

| | |
|----------------------------|--|
| Product Description | Rabbit polyclonal antibody raised against recombinant SLC2A8. |
| Immunogen | Recombinant protein corresponding to amino acids of human SLC2A8. |
| Sequence | PRFLTQHRRQEAMAALRFLWGSEQGWEDPPIGAEQSFHLALLRQPGMKP |
| Host | Rabbit |
| Reactivity | Human |
| Form | Liquid |
| Purification | Antigen affinity purification |
| Isotype | IgG |
| Recommend Usage | Immunohistochemistry (1:20-1:50) The optimal working dilution should be determined by the end user. |
| Storage Buffer | In PBS, pH 7.2 (40% glycerol, 0.02% sodium azide) |
| Storage Instruction | Store at 4°C. For long term storage store at -20°C. Aliquot to avoid repeated freezing and thawing. |

Note

This product contains sodium azide: a POISONOUS AND HAZARDOUS SUBSTANCE which should be handled by trained staff only.

Applications

- Immunohistochemistry (Formalin/PFA-fixed paraffin-embedded sections)

Immunohistochemical staining of human testis with SLC2A8 polyclonal antibody (Cat # PAB20570) shows nuclear and cytoplasmic positivity in cells of seminiferous ducts at 1:10-1:20 dilution.

Gene Info — SLC2A8

Entrez GeneID [29988](#)

Protein Accession# [Q9NY64](#)

Gene Name SLC2A8

Gene Alias GLUT8, GLUTX1

Gene Description solute carrier family 2 (facilitated glucose transporter), member 8

Omim ID [605245](#)

Gene Ontology [Hyperlink](#)

Gene Summary O

Other Designations OTTHUMP00000022176|glucose transporter X1