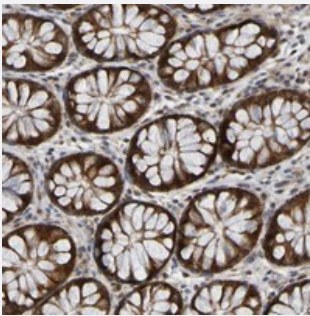


CCDC51 polyclonal antibody

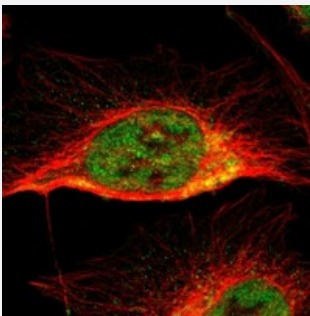
Catalog # PAB20552 Size 100 uL

Applications



Immunohistochemistry (Formalin/PFA-fixed paraffin-embedded sections)

Immunohistochemical staining of human colon with CCDC51 polyclonal antibody (Cat # PAB20552) shows strong cytoplasmic positivity in glandular cells.



Immunofluorescence

Immunofluorescent staining of human cell line U-2 OS with CCDC51 polyclonal antibody (Cat # PAB20552) at 1-4 ug/mL dilution shows positivity in nucleus but not nucleoli, mitochondria.

Specification

Product Description	Rabbit polyclonal antibody raised against recombinant CCDC51.
Immunogen	Recombinant protein corresponding to amino acids of human CCDC51.
Sequence	RLQELKALLLEAQKGPVSLQEAIREQASSYSRQQRDHLNLMVDLRGLVHAAGPGQDSGSQAGS PPTRDRDQVDVLSAALKEQLSHSRQVHSCLEGLREQLDGLEKTCSQMAGVVQLVKSAAHPGLVE PADGAMPNFLLEQGSMLAL
Host	Rabbit
Reactivity	Human
Form	Liquid

Purification	Antigen affinity purification
Isotype	IgG
Recommend Usage	Immunohistochemistry (1:50-1:200) Immunofluorescence (1-4 ug/mL) The optimal working dilution should be determined by the end user.
Storage Buffer	In PBS, pH 7.2 (40% glycerol, 0.02% sodium azide)
Storage Instruction	Store at 4°C. For long term storage store at -20°C. Aliquot to avoid repeated freezing and thawing.
Note	This product contains sodium azide: a POISONOUS AND HAZARDOUS SUBSTANCE which should be handled by trained staff only.

Applications

- Immunohistochemistry (Formalin/PFA-fixed paraffin-embedded sections)

Immunohistochemical staining of human colon with CCDC51 polyclonal antibody (Cat # PAB20552) shows strong cytoplasmic positivity in glandular cells.

- Immunofluorescence

Immunofluorescent staining of human cell line U-2 OS with CCDC51 polyclonal antibody (Cat # PAB20552) at 1-4 ug/mL dilution shows positivity in nucleus but not nucleoli, mitochondria.

Gene Info — CCDC51

Entrez GeneID	79714
Protein Accession#	Q96ER9
Gene Name	CCDC51
Gene Alias	FLJ12436
Gene Description	coiled-coil domain containing 51
Gene Ontology	Hyperlink
Other Designations	OTTHUMP00000164815