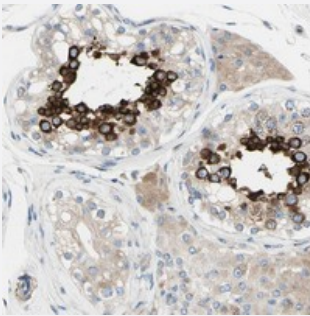


FAM134A polyclonal antibody

Catalog # PAB20542 Size 100 uL

Applications



Immunohistochemistry (Formalin/PFA-fixed paraffin-embedded sections)

Immunohistochemical staining of human testis with FAM134A polyclonal antibody (Cat # PAB20542) shows strong cytoplasmic positivity in cells in seminiferous ducts.

Specification

| | |
|----------------------------|--|
| Product Description | Rabbit polyclonal antibody raised against recombinant FAM134A. |
| Immunogen | Recombinant protein corresponding to amino acids of human FAM134A. |
| Sequence | SGGFSVSRATTPQLTDVSEDLDQQSLPSEPEETLSRDLGEGEEGELAPPEDLLGRPQALSRQAL DSEEEEEEDVAAKETLLRLSSPLHFVNTHFNGAGSPPDGVKCSPPGGPVETLSPETVSGGLTALPG TLSPPLCLVGSDPA |
| Host | Rabbit |
| Reactivity | Human |
| Form | Liquid |
| Purification | Antigen affinity purification |
| Isotype | IgG |
| Recommend Usage | Immunohistochemistry (1:200-1:500) The optimal working dilution should be determined by the end user. |
| Storage Buffer | In PBS, pH 7.2 (40% glycerol, 0.02% sodium azide) |

Storage Instruction

Store at 4°C. For long term storage store at -20°C.
Aliquot to avoid repeated freezing and thawing.

Note

This product contains sodium azide: a POISONOUS AND HAZARDOUS SUBSTANCE which should be handled by trained staff only.

Applications

- Immunohistochemistry (Formalin/PFA-fixed paraffin-embedded sections)

Immunohistochemical staining of human testis with FAM134A polyclonal antibody (Cat # PAB20542) shows strong cytoplasmic positivity in cells in seminiferous ducts.

Gene Info — FAM134A

Entrez GeneID[79137](#)**Protein Accession#**[Q8NC44](#)**Gene Name**

FAM134A

Gene Alias

C2orf17, DKFZp686C2379, MGC3035

Gene Description

family with sequence similarity 134, member A

Gene Ontology[Hyperlink](#)**Gene Summary**

O

Other Designations

hypothetical protein LOC79137