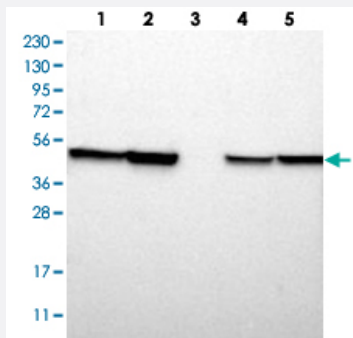


ABHD3 polyclonal antibody

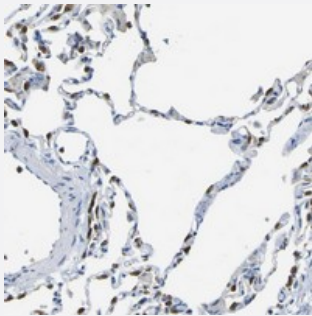
Catalog # PAB20508 Size 100 uL

Applications



Western Blot

Western blot analysis of Lane 1: RT-4, Lane 2: U-251 MG, Lane 3: Human Plasma, Lane 4: Liver, Lane 5: Tonsil with ABHD3 polyclonal antibody (Cat # PAB20508).



Immunohistochemistry (Formalin/PFA-fixed paraffin-embedded sections)

Immunohistochemical staining of human lung with ABHD3 polyclonal antibody (Cat # PAB20508) shows strong cytoplasmic positivity in a subset of alveolar cells.

Specification

Product Description	Rabbit polyclonal antibody raised against recombinant ABHD3.
Immunogen	Recombinant protein corresponding to amino acids of human ABHD3.
Sequence	KKPQLVTGGESFSRFLQDHCPVVTETYPTVWCWEGRGQTLLRPFITSKPPVQYRNELIKTADGG QISLDWFDNDNSTCYMDASTRPTILLPLGLTGTSKESYLHMIHLSEELGYRCVVFNNRGVAGENLL TPRTYCCANTEDLE
Host	Rabbit
Reactivity	Human
Form	Liquid

Purification	Antigen affinity purification
Isotype	IgG
Recommend Usage	Immunohistochemistry (1:50-1:200) Western Blot (1:250-1:500) The optimal working dilution should be determined by the end user.
Storage Buffer	In PBS, pH 7.2 (40% glycerol, 0.02% sodium azide)
Storage Instruction	Store at 4°C. For long term storage store at -20°C. Aliquot to avoid repeated freezing and thawing.
Note	This product contains sodium azide: a POISONOUS AND HAZARDOUS SUBSTANCE which should be handled by trained staff only.

Applications

- Western Blot

Western blot analysis of Lane 1: RT-4, Lane 2: U-251 MG, Lane 3: Human Plasma, Lane 4: Liver, Lane 5: Tonsil with ABHD3 polyclonal antibody (Cat # PAB20508).

- Immunohistochemistry (Formalin/PFA-fixed paraffin-embedded sections)

Immunohistochemical staining of human lung with ABHD3 polyclonal antibody (Cat # PAB20508) shows strong cytoplasmic positivity in a subset of alveolar cells.

Gene Info — ABHD3

Entrez GeneID	171586
Protein Accession#	Q8WU67
Gene Name	ABHD3
Gene Alias	LABH3, MGC11259
Gene Description	abhydrolase domain containing 3
Gene Ontology	Hyperlink
Gene Summary	This gene encodes a protein containing an alpha/beta hydrolase fold, which is a catalytic domain found in a very wide range of enzymes. The function of this protein has not been determined. [provided by RefSeq]
Other Designations	alpha/beta hydrolase domain containing protein 3 lung alpha/beta hydrolase 3