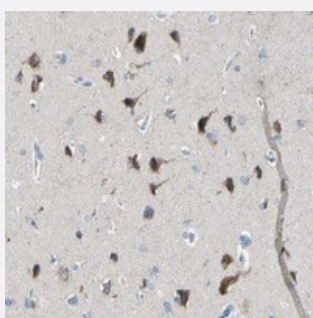


# TMEM59L polyclonal antibody

Catalog # PAB20505      Size 100 uL

## Applications



### Immunohistochemistry (Formalin/PFA-fixed paraffin-embedded sections)

Immunohistochemical staining of human cerebral cortex with TMEM59L polyclonal antibody (Cat # PAB20505) shows moderate cytoplasmic positivity in neuronal cells at 1:20-1:50 dilution.

## Specification

Product Description	Rabbit polyclonal antibody raised against recombinant TMEM59L.
Immunogen	Recombinant protein corresponding to amino acids of human TMEM59L.
Sequence	SLLDLFSTLCNDLVNSAQGFVSSTWTYYLQTDNGKVVVFQTQPVESLGFQGGRLQRVEVTWRG SHPEALEVHVDVPGPLDKVRKAKIRVKTSSKAKVESEEPQDNDNFLSCMSR
Host	Rabbit
Reactivity	Human
Form	Liquid
Purification	Antigen affinity purification
Isotype	IgG
Recommend Usage	Immunohistochemistry (1:20-1:50) The optimal working dilution should be determined by the end user.
Storage Buffer	In PBS, pH 7.2 (40% glycerol, 0.02% sodium azide)

**Storage Instruction**

Store at 4°C. For long term storage store at -20°C.  
Aliquot to avoid repeated freezing and thawing.

**Note**

This product contains sodium azide: a POISONOUS AND HAZARDOUS SUBSTANCE which should be handled by trained staff only.

## Applications

- Immunohistochemistry (Formalin/PFA-fixed paraffin-embedded sections)

Immunohistochemical staining of human cerebral cortex with TMEM59L polyclonal antibody (Cat # PAB20505) shows moderate cytoplasmic positivity in neuronal cells at 1:20-1:50 dilution.

## Gene Info — TMEM59L

**Entrez GeneID**[25789](#)**Protein Accession#**[Q9UK28](#)**Gene Name**

TMEM59L

**Gene Alias**

BSMAP, C19orf4

**Gene Description**

transmembrane protein 59-like

**Gene Ontology**[Hyperlink](#)**Gene Summary**

This gene encodes a predicted type-I membrane glycoprotein. The encoded protein may play a role in functioning of the central nervous system. [provided by RefSeq]

**Other Designations**

brain-specific membrane-anchored protein