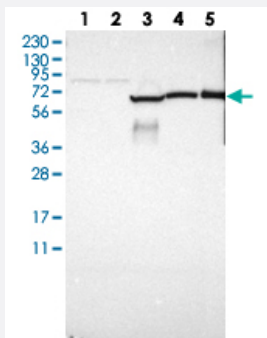


GAB3 polyclonal antibody

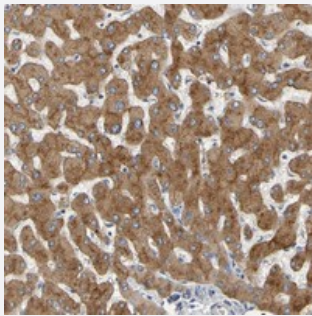
Catalog # PAB20494 Size 100 uL

Applications



Western Blot

Western blot analysis of Lane 1: RT-4, Lane 2: U-251 MG, Lane 3: Human Plasma, Lane 4: Liver, Lane 5: Tonsil with GAB3 polyclonal antibody (Cat # PAB20494).



Immunohistochemistry (Formalin/PFA-fixed paraffin-embedded sections)

Immunohistochemical staining of human liver with GAB3 polyclonal antibody (Cat # PAB20494) shows moderate cytoplasmic positivity in hepatocytes.

Specification

Product Description	Rabbit polyclonal antibody raised against recombinant GAB3.
Immunogen	Recombinant protein corresponding to amino acids of human GAB3.
Sequence	CTLVPRRISLSGLDNMRTWKADVEGQSLRHRDKRLSLNLPCRFSMPYPTASASIEDSYVPMSPQ AGASGLGPHCSPDDYPMNSGSISSPLPELPANLEPPPVNRDLKPQRKSRPPPLDLRNLSIIREHA SLTRTRTVPCSRTSF
Host	Rabbit
Reactivity	Human
Form	Liquid

Purification	Antigen affinity purification
Isotype	IgG
Recommend Usage	Immunohistochemistry (1:200-1:500) Western Blot (1:250-1:500) The optimal working dilution should be determined by the end user.
Storage Buffer	In PBS, pH 7.2 (40% glycerol, 0.02% sodium azide)
Storage Instruction	Store at 4°C. For long term storage store at -20°C. Aliquot to avoid repeated freezing and thawing.
Note	This product contains sodium azide: a POISONOUS AND HAZARDOUS SUBSTANCE which should be handled by trained staff only.

Applications

- Western Blot

Western blot analysis of Lane 1: RT-4, Lane 2: U-251 MG, Lane 3: Human Plasma, Lane 4: Liver, Lane 5: Tonsil with GAB3 polyclonal antibody (Cat # PAB20494).

- Immunohistochemistry (Formalin/PFA-fixed paraffin-embedded sections)

Immunohistochemical staining of human liver with GAB3 polyclonal antibody (Cat # PAB20494) shows moderate cytoplasmic positivity in hepatocytes.

Gene Info — GAB3

Entrez GeneID	139716
Protein Accession#	Q8VWW8
Gene Name	GAB3
Gene Alias	-
Gene Description	GRB2-associated binding protein 3
Omim ID	300482
Gene Ontology	Hyperlink

Gene Summary

This gene is a member of the GRB2-associated binding protein gene family. These proteins are scaffolding/docking proteins that are involved in several growth factor and cytokine signaling pathways, and they contain a pleckstrin homology domain, and bind SHP2 tyrosine phosphatase and GRB2 adapter protein. The protein encoded by this gene facilitates macrophage differentiation. Two transcript variants encoding different isoforms have been found for this gene. [provided by RefSeq]

Other Designations

DOS/Gab family member 3|Gab3 protein|Gab3 scaffolding protein|OTTHUMP00000026055

Disease

- [Cardiovascular Diseases](#)
- [Diabetes Mellitus](#)
- [Edema](#)