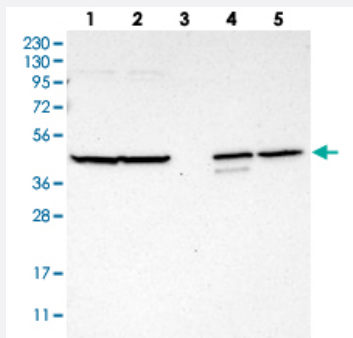


C1orf159 polyclonal antibody

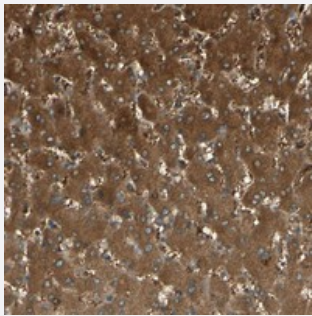
Catalog # PAB20490 Size 100 uL

Applications



Western Blot

Western blot analysis of Lane 1: RT-4, Lane 2: U-251 MG, Lane 3: Human Plasma, Lane 4: Liver, Lane 5: Tonsil with C1orf159 polyclonal antibody (Cat # PAB20490) at 1:250-1:500 dilution.



Immunohistochemistry (Formalin/PFA-fixed paraffin-embedded sections)

Immunohistochemical staining of human liver with C1orf159 polyclonal antibody (Cat # PAB20490) shows strong nuclear and cytoplasmic positivity in hepatocytes at 1:50-1:200 dilution.

Specification

Product Description	Rabbit polyclonal antibody raised against recombinant C1orf159.
Immunogen	Recombinant protein corresponding to amino acids of human C1orf159.
Sequence	PVTSMLFPVPETWGLQERRTHHADRDPQYLLLEVLHPRTDAAGLRQALLSSHRFSGAGSGGP KSQPVKPRYVRRERPLDRATDPAAFPGEARISNV
Host	Rabbit
Reactivity	Human
Form	Liquid

Purification	Antigen affinity purification
Isotype	IgG
Recommend Usage	Immunohistochemistry (1:50-1:200) Western Blot (1:250-1:500) The optimal working dilution should be determined by the end user.
Storage Buffer	In PBS, pH 7.2 (40% glycerol, 0.02% sodium azide)
Storage Instruction	Store at 4°C. For long term storage store at -20°C. Aliquot to avoid repeated freezing and thawing.
Note	This product contains sodium azide: a POISONOUS AND HAZARDOUS SUBSTANCE which should be handled by trained staff only.

Applications

- Western Blot

Western blot analysis of Lane 1: RT-4, Lane 2: U-251 MG, Lane 3: Human Plasma, Lane 4: Liver, Lane 5: Tonsil with C1orf159 polyclonal antibody (Cat # PAB20490) at 1:250-1:500 dilution.

- Immunohistochemistry (Formalin/PFA-fixed paraffin-embedded sections)

Immunohistochemical staining of human liver with C1orf159 polyclonal antibody (Cat # PAB20490) shows strong nuclear and cytoplasmic positivity in hepatocytes at 1:50-1:200 dilution.

Gene Info — C1orf159

Entrez GeneID	54991
Protein Accession#	Q96HA4
Gene Name	C1orf159
Gene Alias	FLJ20584, FLJ21143, FLJ36119
Gene Description	chromosome 1 open reading frame 159
Gene Ontology	Hyperlink
Other Designations	OTTHUMP00000044090 hypothetical protein LOC54991