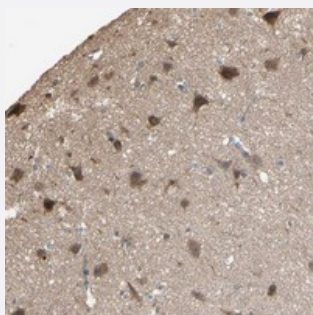


PNPLA7 polyclonal antibody

Catalog # PAB20475 Size 100 uL

Applications



Immunohistochemistry (Formalin/PFA-fixed paraffin-embedded sections)

Immunohistochemical staining of human cerebral cortex with PNPLA7 polyclonal antibody (Cat # PAB20475) shows strong cytoplasmic positivity in neuronal cells.

Specification

Product Description	Rabbit polyclonal antibody raised against recombinant PNPLA7.
Immunogen	Recombinant protein corresponding to amino acids of human PNPLA7.
Sequence	CEVGYQHGRTVFDIWGRSGVLEKMLRDQQGPSKKPASAVLTCPNASFTDLAEIVSRIEPAKPAM VDDESDYQTEYEEELLDVPRDAYADFQSTSAQQGSDLEDESSLRHRHPSLAFPKLSE
Host	Rabbit
Reactivity	Human
Form	Liquid
Purification	Antigen affinity purification
Isotype	IgG
Recommend Usage	Immunohistochemistry (1:50-1:200) The optimal working dilution should be determined by the end user.
Storage Buffer	In PBS, pH 7.2 (40% glycerol, 0.02% sodium azide)

Storage Instruction

Store at 4°C. For long term storage store at -20°C.
Aliquot to avoid repeated freezing and thawing.

Note

This product contains sodium azide: a POISONOUS AND HAZARDOUS SUBSTANCE which should be handled by trained staff only.

Applications

- Immunohistochemistry (Formalin/PFA-fixed paraffin-embedded sections)

Immunohistochemical staining of human cerebral cortex with PNPLA7 polyclonal antibody (Cat # PAB20475) shows strong cytoplasmic positivity in neuronal cells.

Gene Info — PNPLA7

Entrez GeneID[375775](#)**Protein Accession#**[Q6ZV29](#)**Gene Name**

PNPLA7

Gene Alias

C9orf111, FLJ31318, FLJ43070, FLJ44279, NTE-R1, NTEL1, RP11-48C7.2

Gene Description

patatin-like phospholipase domain containing 7

Gene Ontology[Hyperlink](#)**Gene Summary**

Human patatin-like phospholipases, such as PNPLA7, have been implicated in regulation of adipocyte differentiation and have been induced by metabolic stimuli (Wilson et al., 2006 [PubMed 16799181]).[supplied by OMIM]

Other Designations

OTTHUMP00000064771|OTTHUMP00000162663