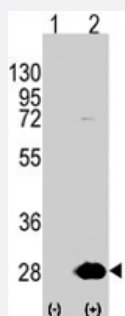


# HSPB1 polyclonal antibody

Catalog # PAB2047

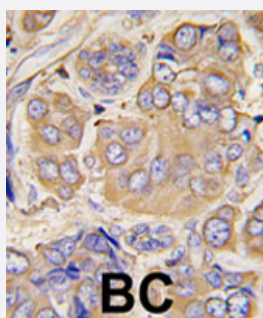
Size 400 uL

## Applications



### Western Blot (Transfected lysate)

Western blot analysis of HSPB1 (arrow) using HSPB1 polyclonal antibody (Cat # PAB2047). 293 cell lysates (2 ug/lane) either nontransfected (Lane 1) or transiently transfected with the HSPB1 gene (Lane 2) (Origene Technologies).



### Immunohistochemistry (Formalin/PFA-fixed paraffin-embedded sections)

Formalin-fixed and paraffin-embedded human breast carcinoma tissue reacted with HSPB1 polyclonal antibody (Cat # PAB2047) , which was peroxidase-conjugated to the secondary antibody, followed by DAB staining.

This data demonstrates the use of this antibody for immunohistochemistry ; clinical relevance has not been evaluated.

## Specification

<b>Product Description</b>	Rabbit polyclonal antibody raised against synthetic peptide of HSPB1.
<b>Immunogen</b>	A synthetic peptide (conjugated with KLH) corresponding to residues surrounding S78 of human HSPB1.
<b>Host</b>	Rabbit
<b>Reactivity</b>	Human
<b>Form</b>	Liquid
<b>Purification</b>	Protein A purification

<b>Recommend Usage</b>	Western Blot (1:1000) The optimal working dilution should be determined by the end user.
<b>Storage Buffer</b>	In PBS (0.09% sodium azide)
<b>Storage Instruction</b>	Store at 4°C. For long term storage store at -20°C. Aliquot to avoid repeated freezing and thawing.
<b>Note</b>	This product contains sodium azide: a POISONOUS AND HAZARDOUS SUBSTANCE which should be handled by trained staff only.

## Applications

- Western Blot (Transfected lysate)

Western blot analysis of HSPB1 (arrow) using HSPB1 polyclonal antibody (Cat # PAB2047). 293 cell lysates (2 ug/lane) either nontransfected (Lane 1) or transiently transfected with the HSPB1 gene (Lane 2) (Origene Technologies).

- Immunohistochemistry (Formalin/PFA-fixed paraffin-embedded sections)

Formalin-fixed and paraffin-embedded human breast carcinoma tissue reacted with HSPB1 polyclonal antibody (Cat # PAB2047), which was peroxidase-conjugated to the secondary antibody, followed by DAB staining.

This data demonstrates the use of this antibody for immunohistochemistry; clinical relevance has not been evaluated.

## Gene Info — HSPB1

<b>Entrez GeneID</b>	<a href="#">3315</a>
<b>Protein Accession#</b>	<a href="#">NP_001531;P04792</a>
<b>Gene Name</b>	HSPB1
<b>Gene Alias</b>	CMT2F, DKFZp586P1322, HMN2B, HS.76067, HSP27, HSP28, Hsp25, SRP27
<b>Gene Description</b>	heat shock 27kDa protein 1
<b>Omim ID</b>	<a href="#">602195</a> <a href="#">606595</a> <a href="#">608634</a>
<b>Gene Ontology</b>	<a href="#">Hyperlink</a>
<b>Gene Summary</b>	The protein encoded by this gene is induced by environmental stress and developmental changes. The encoded protein is involved in stress resistance and actin organization and translocates from the cytoplasm to the nucleus upon stress induction. Defects in this gene are a cause of Charcot-Marie-Tooth disease type 2F (CMT2F) and distal hereditary motor neuropathy (dHMN). [provided by RefSeq]
<b>Other Designations</b>	OTTHUMP00000024846 estrogen-regulated 24 kDa protein heat shock 27kD protein 1 heat shock protein beta-1 stress-responsive protein 27

## Publication Reference

- [Protective role of HSP27 against UVC-induced cell death in human cells.](#)

Wano C, Kita K, Takahashi S, Sugaya S, Hino M, Hosoya H, Suzuki N.

Experimental Cell Research 2004 Aug; 298(2):584.

- [Mutant small heat-shock protein 27 causes axonal Charcot-Marie-Tooth disease and distal hereditary motor neuropathy.](#)

Evgrafov OV, Mersiyanova I, Irobi J, Van Den Bosch L, Dierick I, Leung CL, Schagina O, Verpoorten N, Van Impe K, Fedotov V, Dadali E, Auer-Grumbach M, Windpassinger C, Wagner K, Mitrovic Z, Hilton-Jones D, Talbot K, Martin JJ, Vasserman N, Tverskaya S, Polyakov A, Liem RK, Gettemans J, Robberecht W, De Jonghe P, Timmerman V.

Nature Genetics 2004 May; 36(6):602.

- [Stat3 modulates heat shock 27kDa protein expression in breast epithelial cells.](#)

Song H, Ethier SP, Dziubinski ML, Lin J.

Biochemical and Biophysical Research Communications 2004 Jan; 314(1):143.

## Pathway

- [MAPK signaling pathway](#)
- [VEGF signaling pathway](#)

## Disease

- [Adenocarcinoma](#)
- [Carcinoma](#)
- [Charcot-Marie-Tooth Disease](#)
- [Diabetic Nephropathies](#)
- [Genetic Predisposition to Disease](#)
- [Lung Neoplasms](#)
- [Small Cell Lung Carcinoma](#)