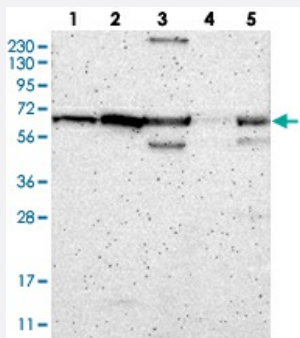


# ME2 polyclonal antibody

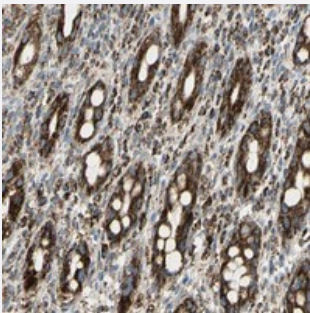
Catalog # PAB20457      Size 100 uL

## Applications



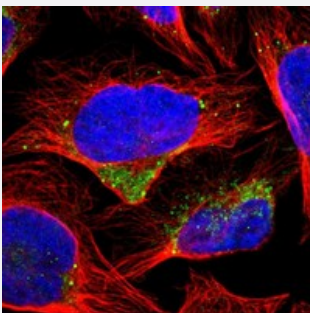
### Western Blot

Western blot analysis of Lane 1: RT-4, Lane 2: U-251 MG, Lane 3: Human Plasma, Lane 4: Liver, Lane 5: Tonsil with ME2 polyclonal antibody (Cat # PAB20457) at 1:250-1:500 dilution.



### Immunohistochemistry (Formalin/PFA-fixed paraffin-embedded sections)

Immunohistochemical staining of human rectum with ME2 polyclonal antibody (Cat # PAB20457) shows strong cytoplasmic positivity in glandular cells at 1:20-1:50 dilution.



### Immunofluorescence

Immunofluorescent staining of human cell line U-2 OS with ME2 polyclonal antibody (Cat # PAB20457) at 1-4 ug/mL dilution shows positivity in mitochondria.

## Specification

### Product Description

Rabbit polyclonal antibody raised against recombinant ME2.

### Immunogen

Recombinant protein corresponding to amino acids of human ME2.

<b>Sequence</b>	KVISKPISEHKILFLGAGEAALGIANLIVMSMVENGLSEQEAQKKIWMFDKYGLLVKGRKAKIDSYQ EPFTHSAPESIPDTFEDAVNILKPSTIGVAGAGRLFTPDVIRAMASINERPVIFALSNPTA
<b>Host</b>	Rabbit
<b>Reactivity</b>	Human
<b>Form</b>	Liquid
<b>Purification</b>	Antigen affinity purification
<b>Isotype</b>	IgG
<b>Recommend Usage</b>	Immunohistochemistry (1:20-1:50) Western Blot (1:250-1:500) Immunofluorescence (1-4 ug/mL) The optimal working dilution should be determined by the end user.
<b>Storage Buffer</b>	In PBS, pH 7.2 (40% glycerol, 0.02% sodium azide)
<b>Storage Instruction</b>	Store at 4°C. For long term storage store at -20°C. Aliquot to avoid repeated freezing and thawing.
<b>Note</b>	This product contains sodium azide: a POISONOUS AND HAZARDOUS SUBSTANCE which should be handled by trained staff only.

## Applications

- Western Blot

Western blot analysis of Lane 1: RT-4, Lane 2: U-251 MG, Lane 3: Human Plasma, Lane 4: Liver, Lane 5: Tonsil with ME2 polyclonal antibody (Cat # PAB20457) at 1:250-1:500 dilution.

- Immunohistochemistry (Formalin/PFA-fixed paraffin-embedded sections)

Immunohistochemical staining of human rectum with ME2 polyclonal antibody (Cat # PAB20457) shows strong cytoplasmic positivity in glandular cells at 1:20-1:50 dilution.

- Immunofluorescence

Immunofluorescent staining of human cell line U-2 OS with ME2 polyclonal antibody (Cat # PAB20457) at 1-4 ug/mL dilution shows positivity in mitochondria.

## Gene Info — ME2

Entrez GeneID [4200](#)

Protein Accession# [P23368](#)

Gene Name	ME2
Gene Alias	-
Gene Description	malic enzyme 2, NAD(+)-dependent, mitochondrial
Omim ID	<a href="#">154270 600669</a>
Gene Ontology	<a href="#">Hyperlink</a>
Gene Summary	This gene encodes a mitochondrial NAD-dependent malic enzyme, a homotetrameric protein, that catalyzes the oxidative decarboxylation of malate to pyruvate. It had previously been weakly linked to a syndrome known as Friedreich ataxia that has since been shown to be the result of mutation in a completely different gene. [provided by RefSeq]
Other Designations	Malic enzyme, mitochondrial malate dehydrogenase malic enzyme 2, mitochondrial pyruvic-malic carboxylase

## Pathway

- [Biosynthesis of alkaloids derived from terpenoid and polyketide](#)
- [Biosynthesis of phenylpropanoids](#)
- [Pyruvate metabolism](#)

## Disease

- [Epilepsy](#)
- [Genetic Predisposition to Disease](#)