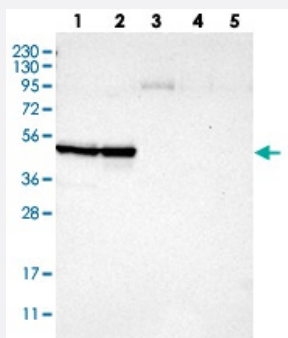


CCNB2 polyclonal antibody

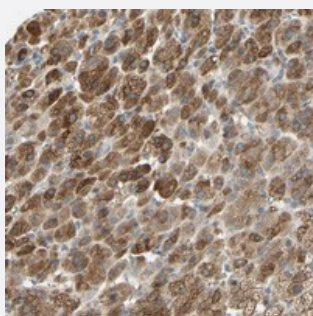
Catalog # PAB20456 Size 100 uL

Applications



Western Blot

Western blot analysis of Lane 1: RT-4, Lane 2: U-251 MG, Lane 3: Human Plasma, Lane 4: Liver, Lane 5: Tonsil with CCNB2 polyclonal antibody (Cat # PAB20456) at 1:250-1:500 dilution.



Immunohistochemistry (Formalin/PFA-fixed paraffin-embedded sections)

Immunohistochemical staining of human adrenal gland with CCNB2 polyclonal antibody (Cat # PAB20456) shows strong cytoplasmic positivity in cortical cells at 1:200-1:500 dilution.

Specification

Product Description	Rabbit polyclonal antibody raised against recombinant CCNB2.
Immunogen	Recombinant protein corresponding to amino acids of human CCNB2.
Sequence	TVSSDLENIDTGVNSKVKSHVTIRRTVLEEIGNRVTTAAQVAKKAQNTKVPVQPTKTTNVNKQLKPTASVKPVQMEKLAPKGPSPTPEDVSMKEENLCQAFSDALLCKIEDIDNEDWENPQLC
Host	Rabbit
Reactivity	Human
Form	Liquid

Purification	Antigen affinity purification
Isotype	IgG
Recommend Usage	Immunohistochemistry (1:200-1:500) Western Blot (1:250-1:500) The optimal working dilution should be determined by the end user.
Storage Buffer	In PBS, pH 7.2 (40% glycerol, 0.02% sodium azide)
Storage Instruction	Store at 4°C. For long term storage store at -20°C. Aliquot to avoid repeated freezing and thawing.
Note	This product contains sodium azide: a POISONOUS AND HAZARDOUS SUBSTANCE which should be handled by trained staff only.

Applications

- Western Blot

Western blot analysis of Lane 1: RT-4, Lane 2: U-251 MG, Lane 3: Human Plasma, Lane 4: Liver, Lane 5: Tonsil with CCNB2 polyclonal antibody (Cat # PAB20456) at 1:250-1:500 dilution.

- Immunohistochemistry (Formalin/PFA-fixed paraffin-embedded sections)

Immunohistochemical staining of human adrenal gland with CCNB2 polyclonal antibody (Cat # PAB20456) shows strong cytoplasmic positivity in cortical cells at 1:200-1:500 dilution.

Gene Info — CCNB2

Entrez GeneID	9133
Protein Accession#	O95067
Gene Name	CCNB2
Gene Alias	HsT17299
Gene Description	cyclin B2
Omim ID	602755
Gene Ontology	Hyperlink

Gene Summary

Cyclin B2 is a member of the cyclin family, specifically the B-type cyclins. The B-type cyclins, B1 and B2, associate with p34cdc2 and are essential components of the cell cycle regulatory machinery. B1 and B2 differ in their subcellular localization. Cyclin B1 co-localizes with microtubules, whereas cyclin B2 is primarily associated with the Golgi region. Cyclin B2 also binds to transforming growth factor beta RII and thus cyclin B2/cdc2 may play a key role in transforming growth factor beta-mediated cell cycle control. [provided by RefSeq]

Other Designations

-

Pathway

- [Cell cycle](#)
- [p53 signaling pathway](#)

Disease

- [Genetic Predisposition to Disease](#)
- [Ovarian Neoplasms](#)