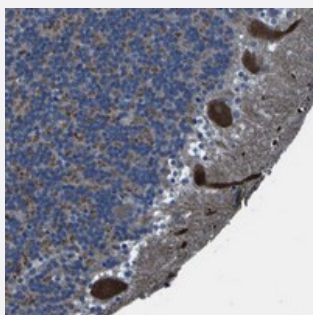


GRAMD1A polyclonal antibody

Catalog # PAB20454 Size 100 uL

Applications



Immunohistochemistry (Formalin/PFA-fixed paraffin-embedded sections)

Immunohistochemical staining of human cerebellum with GRAMD1A polyclonal antibody (Cat # PAB20454) shows strong cytoplasmic positivity in purkinje cells.

Specification

Product Description	Rabbit polyclonal antibody raised against recombinant GRAMD1A.
Immunogen	Recombinant protein corresponding to amino acids of human GRAMD1A.
Sequence	SEDEDYVSPLQLNGLGTPKEVGDVIALSDITSSGAADRSQEPSPVGSRRGHVTPNLSRASSDAD HGAEEEDKEEQVDSQPDASSSQTVTPVAEPPSTEPTQPDGPTTLGPLDLLPS
Host	Rabbit
Reactivity	Human
Form	Liquid
Purification	Antigen affinity purification
Isotype	IgG
Recommend Usage	Immunohistochemistry (1:20-1:50) The optimal working dilution should be determined by the end user.
Storage Buffer	In PBS, pH 7.2 (40% glycerol, 0.02% sodium azide)

Storage Instruction

Store at 4°C. For long term storage store at -20°C.
Aliquot to avoid repeated freezing and thawing.

Note

This product contains sodium azide: a POISONOUS AND HAZARDOUS SUBSTANCE which should be handled by trained staff only.

Applications

- Immunohistochemistry (Formalin/PFA-fixed paraffin-embedded sections)

Immunohistochemical staining of human cerebellum with GRAMD1A polyclonal antibody (Cat # PAB20454) shows strong cytoplasmic positivity in purkinje cells.

Gene Info — GRAMD1A

Entrez GeneID[57655](#)**Protein Accession#**[Q96CP6](#)**Gene Name**

GRAMD1A

Gene Alias

FLJ22411, FLJ90346, KIAA1533

Gene Description

GRAM domain containing 1A

Gene Ontology[Hyperlink](#)**Other Designations**

-