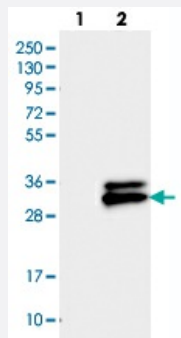


TMEM176A polyclonal antibody

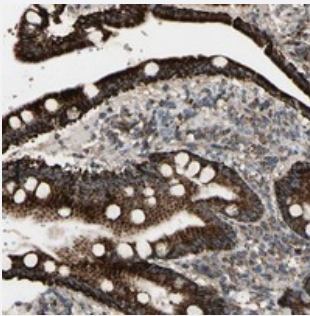
Catalog # PAB20447 Size 100 uL

Applications



Western Blot (Transfected lysate)

Western blot analysis of Lane 1: Negative control (vector only transfected HEK293T lysate), Lane 2: Over-expression Lysate (Co-expressed with a C-terminal myc-DDK tag (~3.1 kDa) in mammalian HEK293T cells with TMEM176A polyclonal antibody (Cat # PAB20447).



Immunohistochemistry (Formalin/PFA-fixed paraffin-embedded sections)

Immunohistochemical staining of human duodenum with TMEM176A polyclonal antibody (Cat # PAB20447) shows strong cytoplasmic positivity in glandular cells.

Specification

Product Description	Rabbit polyclonal antibody raised against recombinant TMEM176A.
Immunogen	Recombinant protein corresponding to amino acids of human TMEM176A.
Sequence	MGTADSDMAPEAPQHITHIDVHIHQESALAKLLLTCCSALRPRATQAR
Host	Rabbit
Reactivity	Human
Form	Liquid
Purification	Antigen affinity purification

Isotype	IgG
Recommend Usage	Immunohistochemistry (1:20-1:50) Western Blot (1:250-1:500) The optimal working dilution should be determined by the end user.
Storage Buffer	In PBS, pH 7.2 (40% glycerol, 0.02% sodium azide)
Storage Instruction	Store at 4°C. For long term storage store at -20°C. Aliquot to avoid repeated freezing and thawing.
Note	This product contains sodium azide: a POISONOUS AND HAZARDOUS SUBSTANCE which should be handled by trained staff only.

Applications

- Western Blot (Transfected lysate)

Western blot analysis of Lane 1: Negative control (vector only transfected HEK293T lysate), Lane 2: Over-expression Lysate (Co-expressed with a C-terminal myc-DDK tag (~3.1 kDa) in mammalian HEK293T cells with TMEM176A polyclonal antibody (Cat # PAB20447).

- Immunohistochemistry (Formalin/PFA-fixed paraffin-embedded sections)

Immunohistochemical staining of human duodenum with TMEM176A polyclonal antibody (Cat # PAB20447) shows strong cytoplasmic positivity in glandular cells.

Gene Info — TMEM176A

Entrez GeneID	55365
Protein Accession#	Q96HP8
Gene Name	TMEM176A
Gene Alias	GS188, HCA112
Gene Description	transmembrane protein 176A
Omim ID	610334
Gene Ontology	Hyperlink
Other Designations	hepatocellular carcinoma-associated antigen 112 likely ortholog of mouse GS188