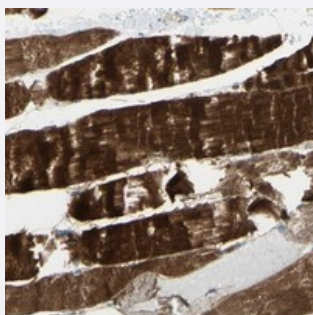


# CACNA2D1 polyclonal antibody

Catalog # PAB20441      Size 100 uL

## Applications



### Immunohistochemistry (Formalin/PFA-fixed paraffin-embedded sections)

Immunohistochemical staining of human skeletal muscle with CACNA2D1 polyclonal antibody (Cat # PAB20441) shows strong cytoplasmic positivity in myocytes at 1:50-1:200 dilution.

## Specification

Product Description	Rabbit polyclonal antibody raised against recombinant CACNA2D1.
Immunogen	Recombinant protein corresponding to amino acids of human CACNA2D1.
Sequence	QFLLSLTFPRLLLEAVEMEDDDFTASLSKQSCITEQTQYFFDNDSDKSFSGVLDCGNCSRIFHGEKL MNTNLIFIMVESKGTCPDTRLLIQAEQTS DGPNPCDMVKQPRYRKGP
Host	Rabbit
Reactivity	Human
Form	Liquid
Purification	Antigen affinity purification
Isotype	IgG
Recommend Usage	Immunohistochemistry (1:50-1:200) The optimal working dilution should be determined by the end user.
Storage Buffer	In PBS, pH 7.2 (40% glycerol, 0.02% sodium azide)

**Storage Instruction**

Store at 4°C. For long term storage store at -20°C.  
Aliquot to avoid repeated freezing and thawing.

**Note**

This product contains sodium azide: a POISONOUS AND HAZARDOUS SUBSTANCE which should be handled by trained staff only.

## Applications

- Immunohistochemistry (Formalin/PFA-fixed paraffin-embedded sections)

Immunohistochemical staining of human skeletal muscle with CACNA2D1 polyclonal antibody (Cat # PAB20441) shows strong cytoplasmic positivity in myocytes at 1:50-1:200 dilution.

## Gene Info — CACNA2D1

**Entrez GeneID**[781](#)**Protein Accession#**[P54289](#)**Gene Name**

CACNA2D1

**Gene Alias**

CACNA2, CACNL2A, CCHL2A, MHS3

**Gene Description**

calcium channel, voltage-dependent, alpha 2/delta subunit 1

**Omim ID**[114204](#)**Gene Ontology**[Hyperlink](#)**Gene Summary**

This gene encodes a member of the alpha-2/delta subunit family, a protein in the voltage-dependent calcium channel complex. Calcium channels mediate the influx of calcium ions into the cell upon membrane polarization and consist of a complex of alpha-1, alpha-2/delta, beta, and gamma subunits in a 1:1:1:1 ratio. Research on a highly similar protein in rabbit suggests the protein described in this record is cleaved into alpha-2 and delta subunits. Alternate transcriptional splice variants of this gene have been observed but have not been thoroughly characterized. [provided by RefSeq]

**Other Designations**

H\_DJ0560O14.1|WUGSC:H\_DJ0560O14.1|calcium channel, L type, alpha 2 polypeptide|dihydropyridine-sensitive L-type, calcium channel alpha-2/delta subunit

## Pathway

- [Arrhythmogenic right ventricular cardiomyopathy \(ARVC\)](#)
- [Cardiac muscle contraction](#)

- [Hypertrophic cardiomyopathy \(HCM\)](#)
- [MAPK signaling pathway](#)

## Disease

- [Celiac Disease](#)
- [Genetic Predisposition to Disease](#)
- [Tobacco Use Disorder](#)