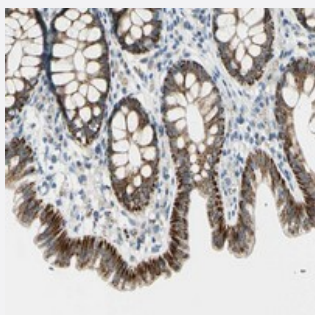


# SLC6A15 polyclonal antibody

Catalog # PAB20440      Size 100 uL

## Applications



### Immunohistochemistry (Formalin/PFA-fixed paraffin-embedded sections)

Immunohistochemical staining of human colon with SLC6A15 polyclonal antibody (Cat # PAB20440) shows strong cytoplasmic positivity in glandular cells.

## Specification

<b>Product Description</b>	Rabbit polyclonal antibody raised against recombinant SLC6A15.
<b>Immunogen</b>	Recombinant protein corresponding to amino acids of human SLC6A15.
<b>Sequence</b>	RELDDDVTESVKDLLSNEDAADDAFKTSELVDGQEEKD TDVEEGSEVEDERPAWNSKLQ
<b>Host</b>	Rabbit
<b>Reactivity</b>	Human
<b>Form</b>	Liquid
<b>Purification</b>	Antigen affinity purification
<b>Isotype</b>	IgG
<b>Recommend Usage</b>	Immunohistochemistry (1:50-1:200) The optimal working dilution should be determined by the end user.
<b>Storage Buffer</b>	In PBS, pH 7.2 (40% glycerol, 0.02% sodium azide)
<b>Storage Instruction</b>	Store at 4°C. For long term storage store at -20°C. Aliquot to avoid repeated freezing and thawing.

## Note

This product contains sodium azide: a POISONOUS AND HAZARDOUS SUBSTANCE which should be handled by trained staff only.

## Applications

- Immunohistochemistry (Formalin/PFA-fixed paraffin-embedded sections)

Immunohistochemical staining of human colon with SLC6A15 polyclonal antibody (Cat # PAB20440) shows strong cytoplasmic positivity in glandular cells.

## Gene Info — SLC6A15

Entrez GeneID [55117](#)

Protein Accession# [Q9H2J7](#)

Gene Name SLC6A15

Gene Alias DKFZp761I0921, FLJ10316, MGC87066, NTT73, SBAT1, V7-3, hv7-3

Gene Description solute carrier family 6 (neutral amino acid transporter), member 15

Omim ID [607971](#)

Gene Ontology [Hyperlink](#)

**Gene Summary** SLC6A15 shows structural characteristics of an Na(+) and Cl(-)-dependent neurotransmitter transporter, including 12 transmembrane (TM) domains, intracellular N and C termini, and large extracellular loops containing multiple N-glycosylation sites (Farmer et al., 2000 [PubMed 11112352]).[s applied by OMIM

**Other Designations** homolog of rat orphan transporter v7-3|sodium/chloride dependent neurotransmitter transporter Homo sapiens orphan neurotransmitter transporter NTT7|solute carrier family 6 (neurotransmitter transporter), member 15|solute carrier family 6, member 15