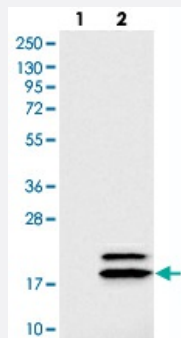


C2orf40 polyclonal antibody

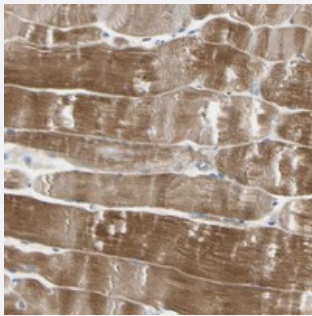
Catalog # PAB20436 Size 100 uL

Applications



Western Blot (Transfected lysate)

Western blot analysis of Lane 1: Negative control (vector only transfected HEK293T lysate), Lane 2: Over-expression Lysate (Co-expressed with a C-terminal myc-DDK tag (~3.1 kDa) in mammalian HEK293T cells with C2orf40 polyclonal antibody (Cat # PAB20436).



Immunohistochemistry (Formalin/PFA-fixed paraffin-embedded sections)

Immunohistochemical staining of human skeletal muscle with C2orf40 polyclonal antibody (Cat # PAB20436) shows strong cytoplasmic positivity in myocytes.

Specification

Product Description	Rabbit polyclonal antibody raised against recombinant C2orf40.
Immunogen	Recombinant protein corresponding to amino acids of human C2orf40.
Sequence	KREAPVPTKTKVAVDENKAKEFLGSLKRQKRQLWDRTRPEVQQWYQQFLYMGFDEAKFEDDIT YWLNRDRNGHEYGDYYQRHYDEDSAIGPRSPYGFRHGASVNYD
Host	Rabbit
Reactivity	Human
Form	Liquid

Purification	Antigen affinity purification
Isotype	IgG
Recommend Usage	Immunohistochemistry (1:200-1:500) Western Blot (1:250-1:500) The optimal working dilution should be determined by the end user.
Storage Buffer	In PBS, pH 7.2 (40% glycerol, 0.02% sodium azide)
Storage Instruction	Store at 4°C. For long term storage store at -20°C. Aliquot to avoid repeated freezing and thawing.
Note	This product contains sodium azide: a POISONOUS AND HAZARDOUS SUBSTANCE which should be handled by trained staff only.

Applications

- Western Blot (Transfected lysate)

Western blot analysis of Lane 1: Negative control (vector only transfected HEK293T lysate), Lane 2: Over-expression Lysate (Co-expressed with a C-terminal myc-DDK tag (~3.1 kDa) in mammalian HEK293T cells with C2orf40 polyclonal antibody (Cat # PAB20436).

- Immunohistochemistry (Formalin/PFA-fixed paraffin-embedded sections)

Immunohistochemical staining of human skeletal muscle with C2orf40 polyclonal antibody (Cat # PAB20436) shows strong cytoplasmic positivity in myocytes.

Gene Info — C2orf40

Entrez GeneID	84417
Protein Accession#	Q9H1Z8
Gene Name	C2orf40
Gene Alias	ECRG4
Gene Description	chromosome 2 open reading frame 40
Gene Ontology	Hyperlink
Other Designations	esophageal cancer related gene 4 protein