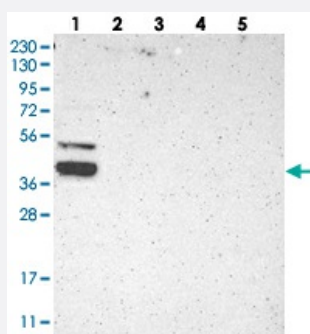


KLHDC8B polyclonal antibody

Catalog # PAB20431

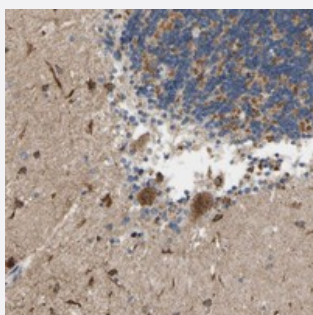
Size 100 uL

Applications



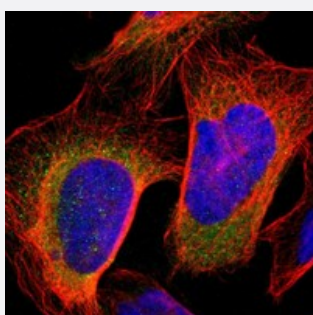
Western Blot

Western blot analysis of Lane 1: RT-4, Lane 2: U-251 MG, Lane 3: Human Plasma, Lane 4: Liver, Lane 5: Tonsil with KLHDC8B polyclonal antibody (Cat # PAB20431) at 1:250-1:500 dilution.



Immunohistochemistry (Formalin/PFA-fixed paraffin-embedded sections)

Immunohistochemical staining of human cerebellum with KLHDC8B polyclonal antibody (Cat # PAB20431) shows strong cytoplasmic positivity in purkinje cells at 1:20-1:50 dilution.



Immunofluorescence

Immunofluorescent staining of human cell line U-2 OS with KLHDC8B polyclonal antibody (Cat # PAB20431) at 1-4 ug/mL dilution shows positivity in cytoplasm.

Specification

Product Description

Rabbit polyclonal antibody raised against recombinant KLHDC8B.

Immunogen

Recombinant protein corresponding to amino acids of human KLHDC8B.

Sequence	GTVAHQDGHLLVLGGCGRAGLPLDTAETLDMASHTWLALAPLPTARAGAAAVVLGKQVLVVG VDEVQSPVAAVEAFMLDEGRWERRATLPQAAMGVATVERDGMVYALG
Host	Rabbit
Reactivity	Human
Form	Liquid
Purification	Antigen affinity purification
Isotype	IgG
Recommend Usage	Immunohistochemistry (1:20-1:50) Western Blot (1:250-1:500) Immunofluorescence (1-4 ug/mL) The optimal working dilution should be determined by the end user.
Storage Buffer	In PBS, pH 7.2 (40% glycerol, 0.02% sodium azide)
Storage Instruction	Store at 4°C. For long term storage store at -20°C. Aliquot to avoid repeated freezing and thawing.
Note	This product contains sodium azide: a POISONOUS AND HAZARDOUS SUBSTANCE which should be handled by trained staff only.

Applications

- Western Blot

Western blot analysis of Lane 1: RT-4, Lane 2: U-251 MG, Lane 3: Human Plasma, Lane 4: Liver, Lane 5: Tonsil with KLHDC8B polyclonal antibody (Cat # PAB20431) at 1:250-1:500 dilution.

- Immunohistochemistry (Formalin/PFA-fixed paraffin-embedded sections)

Immunohistochemical staining of human cerebellum with KLHDC8B polyclonal antibody (Cat # PAB20431) shows strong cytoplasmic positivity in purkinje cells at 1:20-1:50 dilution.

- Immunofluorescence

Immunofluorescent staining of human cell line U-2 OS with KLHDC8B polyclonal antibody (Cat # PAB20431) at 1-4 ug/mL dilution shows positivity in cytoplasm.

Gene Info — KLHDC8B

Entrez GeneID [200942](#)

Protein Accession# [Q8IXV7](#)

Gene Name	KLHDC8B
Gene Alias	FLJ11302, MGC35097
Gene Description	kelch domain containing 8B
Gene Ontology	Hyperlink
Other Designations	-