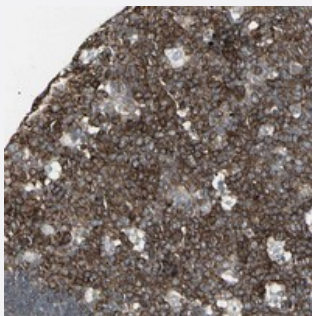


EPS15 polyclonal antibody

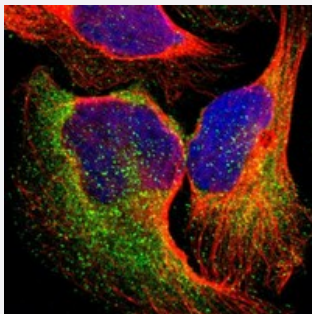
Catalog # PAB20429 Size 100 uL

Applications



Immunohistochemistry (Formalin/PFA-fixed paraffin-embedded sections)

Immunohistochemical staining of human lymph node with EPS15 polyclonal antibody (Cat # PAB20429) shows strong cytoplasmic positivity in reaction center cells.



Immunofluorescence

Immunofluorescent staining of human cell line U-2 OS with EPS15 polyclonal antibody (Cat # PAB20429) at 1-4 ug/mL dilution shows positivity in cytoplasm, vesicles.

Specification

Product Description	Rabbit polyclonal antibody raised against recombinant EPS15.
Immunogen	Recombinant protein corresponding to amino acids of human EPS15.
Sequence	CFFRQSTDPFATSSTDPFSAANNSSITSVETLKHNDPFAPGGTVVAASDSATDPFASVFGNESF GGGFADFSTLSKVNNEDPFRSATSSSVSNVVITKNVFEETSVKSEDEPPALPPKIGTPTRPCPLP PGKRSINKLDSPD
Host	Rabbit
Reactivity	Human
Form	Liquid

Purification	Antigen affinity purification
Isotype	IgG
Recommend Usage	Immunohistochemistry (1:10-1:20) Immunofluorescence (1-4 ug/mL) The optimal working dilution should be determined by the end user.
Storage Buffer	In PBS, pH 7.2 (40% glycerol, 0.02% sodium azide)
Storage Instruction	Store at 4°C. For long term storage store at -20°C. Aliquot to avoid repeated freezing and thawing.
Note	This product contains sodium azide: a POISONOUS AND HAZARDOUS SUBSTANCE which should be handled by trained staff only.

Applications

- Immunohistochemistry (Formalin/PFA-fixed paraffin-embedded sections)

Immunohistochemical staining of human lymph node with EPS15 polyclonal antibody (Cat # PAB20429) shows strong cytoplasmic positivity in reaction center cells.

- Immunofluorescence

Immunofluorescent staining of human cell line U-2 OS with EPS15 polyclonal antibody (Cat # PAB20429) at 1-4 ug/mL dilution shows positivity in cytoplasm, vesicles.

Gene Info — EPS15

Entrez GeneID	2060
Protein Accession#	P42566
Gene Name	EPS15
Gene Alias	AF-1P, AF1P, MLLT5
Gene Description	epidermal growth factor receptor pathway substrate 15
Omim ID	600051
Gene Ontology	Hyperlink

Gene Summary

This gene encodes a protein that is part of the EGFR pathway. The protein is present at clatherin-coated pits and is involved in receptor-mediated endocytosis of EGF. Notably, this gene is rearranged with the HRX/ALL/MLL gene in acute myelogenous leukemias. Alternative splicing results in multiple transcript variants encoding distinct isoforms. [provided by RefSeq]

Other Designations

ALL1 fused gene from chromosome 1|OTTHUMP00000009896

Pathway

- [Endocytosis](#)

Disease

- [Cleft Lip](#)
- [Cleft Palate](#)
- [Kidney Failure](#)