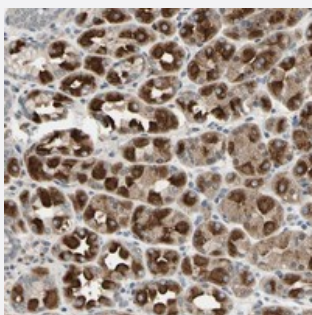


DPY19L3 polyclonal antibody

Catalog # PAB20421 Size 100 uL

Applications



Immunohistochemistry (Formalin/PFA-fixed paraffin-embedded sections)

Immunohistochemical staining of human stomach with DPY19L3 polyclonal antibody (Cat # PAB20421) shows strong cytoplasmic positivity in glandular cells.

Specification

Product Description	Rabbit polyclonal antibody raised against recombinant DPY19L3.
Immunogen	Recombinant protein corresponding to amino acids of human DPY19L3.
Sequence	DTVELMNWINSNTPRKAVFAGSMQLLAGVKLCTGRTLTNHPHYEDSSLRERTRAVYQIYAKRAPE EVHALLRSFGTDYILEDSICYERRHRRGCRLRDLLDIANGHMMDGPGENDPDLKPADHPRFCEEI KRNL P
Host	Rabbit
Reactivity	Human
Form	Liquid
Purification	Antigen affinity purification
Isotype	IgG
Recommend Usage	Immunohistochemistry (1:20-1:50) The optimal working dilution should be determined by the end user.
Storage Buffer	In PBS, pH 7.2 (40% glycerol, 0.02% sodium azide)

Storage Instruction

Store at 4°C. For long term storage store at -20°C.
Aliquot to avoid repeated freezing and thawing.

Note

This product contains sodium azide: a POISONOUS AND HAZARDOUS SUBSTANCE which should be handled by trained staff only.

Applications

- Immunohistochemistry (Formalin/PFA-fixed paraffin-embedded sections)

Immunohistochemical staining of human stomach with DPY19L3 polyclonal antibody (Cat # PAB20421) shows strong cytoplasmic positivity in glandular cells.

Gene Info — DPY19L3

Entrez GeneID [147991](#)

Protein Accession# [Q6ZPD9](#)

Gene Name DPY19L3

Gene Alias DKFZp686J17135, MGC35440

Gene Description dpy-19-like 3 (C. elegans)

Gene Ontology [Hyperlink](#)

Other Designations dpy-19-like 3

Disease

- [Bipolar Disorder](#)
- [Genetic Predisposition to Disease](#)