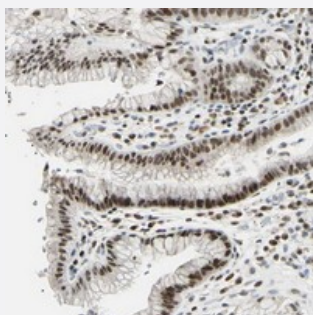


# C1orf174 polyclonal antibody

Catalog # PAB20418

Size 100 uL

## Applications



### Immunohistochemistry (Formalin/PFA-fixed paraffin-embedded sections)

Immunohistochemical staining of human stomach with C1orf174 polyclonal antibody (Cat # PAB20418) shows moderate nuclear positivity in glandular cells.

## Specification

Product Description	Rabbit polyclonal antibody raised against recombinant C1orf174.
Immunogen	Recombinant protein corresponding to amino acids of human C1orf174.
Sequence	VSDSRLAKTRDGLSVPKHSAGSGAEESNSSSTVQKQNEPGLQTEDVQKPPLQMDNSVFLDDD SNQPMMPVSRFFGNVELMQDLPPASSSCPSMSRREFRKMHFRAKDDDDDDDDDD
Host	Rabbit
Reactivity	Human
Form	Liquid
Purification	Antigen affinity purification
Isotype	IgG
Recommend Usage	Immunohistochemistry (1:50-1:200) The optimal working dilution should be determined by the end user.
Storage Buffer	In PBS, pH 7.2 (40% glycerol, 0.02% sodium azide)

**Storage Instruction**

Store at 4°C. For long term storage store at -20°C.  
Aliquot to avoid repeated freezing and thawing.

**Note**

This product contains sodium azide: a POISONOUS AND HAZARDOUS SUBSTANCE which should be handled by trained staff only.

## Applications

- Immunohistochemistry (Formalin/PFA-fixed paraffin-embedded sections)

Immunohistochemical staining of human stomach with C1orf174 polyclonal antibody (Cat # PAB20418) shows moderate nuclear positivity in glandular cells.

## Gene Info — C1orf174

**Entrez GeneID**[339448](#)**Protein Accession#**[Q8ML3](#)**Gene Name**

C1orf174

**Gene Alias**

RP13-531C17.2

**Gene Description**

chromosome 1 open reading frame 174

**Gene Ontology**[Hyperlink](#)**Other Designations**

OTTHUMP00000003854|hypothetical protein LOC339448