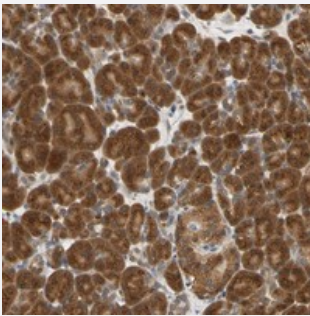


SEC23B polyclonal antibody

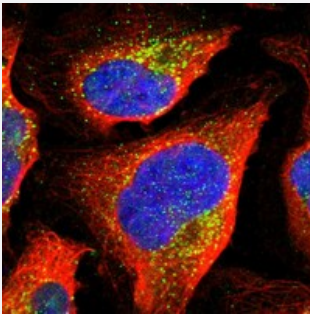
Catalog # PAB20415 Size 100 uL

Applications



Immunohistochemistry (Formalin/PFA-fixed paraffin-embedded sections)

Immunohistochemical staining of human pancreas with SEC23B polyclonal antibody (Cat # PAB20415) shows strong cytoplasmic positivity in exocrine glandular cells and moderate staining in Islet cells.



Immunofluorescence

Immunofluorescent staining of human cell line U-2 OS with SEC23B polyclonal antibody (Cat # PAB20415) at 1-4 ug/mL dilution shows positivity in vesicles.

Specification

Product Description	Rabbit polyclonal antibody raised against recombinant SEC23B.
Immunogen	Recombinant protein corresponding to amino acids of human SEC23B.
Sequence	MVQVHELSCGISKSYVFRGTKDLTAKQIQDMLGLTKPAMPMQARPAQPQEHPFASSRFLQPV HKIDMNLTDLLGELQRDPWPVTQGKRPLRSTGV
Host	Rabbit
Reactivity	Human
Form	Liquid

Purification	Antigen affinity purification
Isotype	IgG
Recommend Usage	Immunofluorescence (1-4 ug/mL) The optimal working dilution should be determined by the end user.
Storage Buffer	In PBS, pH 7.2 (40% glycerol, 0.02% sodium azide)
Storage Instruction	Store at 4°C. For long term storage store at -20°C. Aliquot to avoid repeated freezing and thawing.
Note	This product contains sodium azide: a POISONOUS AND HAZARDOUS SUBSTANCE which should be handled by trained staff only.

Applications

- Immunohistochemistry (Formalin/PFA-fixed paraffin-embedded sections)

Immunohistochemical staining of human pancreas with SEC23B polyclonal antibody (Cat # PAB20415) shows strong cytoplasmic positivity in exocrine glandular cells and moderate staining in Islet cells.

- Immunofluorescence

Immunofluorescent staining of human cell line U-2 OS with SEC23B polyclonal antibody (Cat # PAB20415) at 1-4 ug/mL dilution shows positivity in vesicles.

Gene Info — SEC23B

Entrez GeneID	10483
Protein Accession#	Q15437
Gene Name	SEC23B
Gene Alias	-
Gene Description	Sec23 homolog B (S. cerevisiae)
Omim ID	610512
Gene Ontology	Hyperlink

Gene Summary

The protein encoded by this gene is a member of the SEC23 subfamily of the SEC23/SEC24 family, which is involved in vesicle trafficking. The encoded protein has similarity to yeast Sec23p component of COPII. COPII is the coat protein complex responsible for vesicle budding from the ER. The function of this gene product has been implicated in cargo selection and concentration. Multiple alternatively spliced transcript variants encoding the same protein have been found for this gene. [provided by RefSeq]

Other Designations

OTTHUMP00000042645|OTTHUMP00000042646|OTTHUMP00000042648|OTTHUMP00000063206|SEC23-like protein B|SEC23-related protein B|Sec23 homolog B|transport protein SEC23B

Disease

- [Tobacco Use Disorder](#)