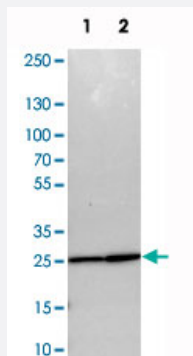


PSMA2 polyclonal antibody

Catalog # PAB20412 Size 100 uL

Applications

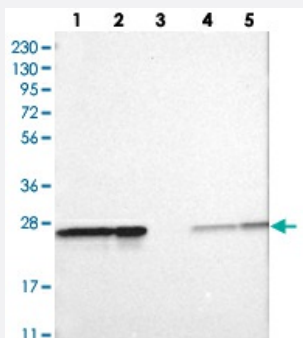


Western Blot (Cell lysate)

Western blot analysis of cell lysates with PSMA2 polyclonal antibody (Cat # PAB20412).

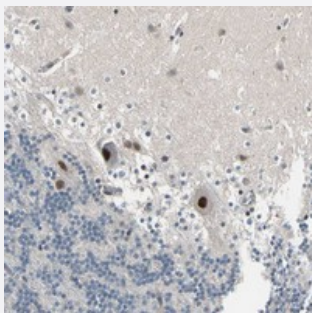
Lane 1 : NIH/3T3

Lane 2 : NBT-II



Western Blot

Western blot analysis of Lane 1: RT-4, Lane 2: U-251 MG, Lane 3: Human Plasma, Lane 4: Liver, Lane 5: Tonsil with PSMA2 polyclonal antibody (Cat # PAB20412).



Immunohistochemistry (Formalin/PFA-fixed paraffin-embedded sections)

Immunohistochemical staining of human cerebellum with PSMA2 polyclonal antibody (Cat # PAB20412) shows strong nuclear positivity in purkinje cells.

Specification

Product Description

Rabbit polyclonal antibody raised against recombinant PSMA2.

Immunogen	Recombinant protein corresponding to amino acids of human PSMA2.
Sequence	SGAYFAWKATAMGKNYVNGKTFLEKRYNEDLELEDIAHTAILTKESFEGQMTEDNIEVGICNEAG FRRLTPTEVKDYLAIA
Host	Rabbit
Reactivity	Human, Mouse, Rat
Form	Liquid
Purification	Antigen affinity purification
Isotype	IgG
Recommend Usage	Immunohistochemistry (1:200-1:500) Western Blot (1:250-1:500) The optimal working dilution should be determined by the end user.
Storage Buffer	In PBS, pH 7.2 (40% glycerol, 0.02% sodium azide)
Storage Instruction	Store at 4°C. For long term storage store at -20°C. Aliquot to avoid repeated freezing and thawing.
Note	This product contains sodium azide: a POISONOUS AND HAZARDOUS SUBSTANCE which should be handled by trained staff only.

Applications

- Western Blot (Cell lysate)

Western blot analysis of cell lysates with PSMA2 polyclonal antibody (Cat # PAB20412).

Lane 1 : NIH/3T3

Lane 2 : NBT-II

- Western Blot

Western blot analysis of Lane 1: RT-4, Lane 2: U-251 MG, Lane 3: Human Plasma, Lane 4: Liver, Lane 5: Tonsil with PSMA2 polyclonal antibody (Cat # PAB20412).

- Immunohistochemistry (Formalin/PFA-fixed paraffin-embedded sections)

Immunohistochemical staining of human cerebellum with PSMA2 polyclonal antibody (Cat # PAB20412) shows strong nuclear positivity in purkinje cells.

Gene Info — PSMA2

Entrez GeneID

[5683](#)

Protein Accession#	P25787
Gene Name	PSMA2
Gene Alias	HC3, MU, PMSA2, PSC2
Gene Description	proteasome (prosome, macropain) subunit, alpha type, 2
Omim ID	176842
Gene Ontology	Hyperlink
Gene Summary	<p>The proteasome is a multicatalytic proteinase complex with a highly ordered ring-shaped 20S core structure. The core structure is composed of 4 rings of 28 non-identical subunits; 2 rings are composed of 7 alpha subunits and 2 rings are composed of 7 beta subunits. Proteasomes are distributed throughout eukaryotic cells at a high concentration and cleave peptides in an ATP/ubiquitin-dependent process in a non-lysosomal pathway. An essential function of a modified proteasome, the immunoproteasome, is the processing of class I MHC peptides. This gene encodes a member of the peptidase T1A family, that is a 20S core alpha subunit. [provided by RefSeq]</p>
Other Designations	macropain subunit C3 multicatalytic endopeptidase complex subunit C3 proteasome alpha 2 subunit proteasome component C3 proteasome subunit HC3

Pathway

- [Proteasome](#)