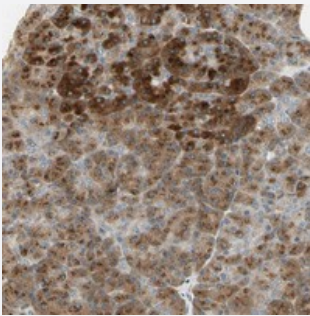


# MANSC1 polyclonal antibody

Catalog # PAB20401      Size 100 uL

## Applications



### Immunohistochemistry (Formalin/PFA-fixed paraffin-embedded sections)

Immunohistochemical staining of human pancreas with MANSC1 polyclonal antibody (Cat # PAB20401) shows strong cytoplasmic positivity with granular pattern in exocrine glandular cells at 1:20-1:50 dilution.

## Specification

<b>Product Description</b>	Rabbit polyclonal antibody raised against recombinant MANSC1.
<b>Immunogen</b>	Recombinant protein corresponding to amino acids of human MANSC1.
<b>Sequence</b>	TLLPTNASVTPSGTSQPQLATTAPPVTTVTSQPPTTLISTVFTRAAATLQAMATTAVLTTTFQAPTD SKGSLETIPFTEISNLTNTGNVYNPTALSMSNVESSTMNKASWEGREASPGSSSQGSVPENQY G
<b>Host</b>	Rabbit
<b>Reactivity</b>	Human
<b>Form</b>	Liquid
<b>Purification</b>	Antigen affinity purification
<b>Isotype</b>	IgG
<b>Recommend Usage</b>	Immunohistochemistry (1:20-1:50) Western Blot (1:250-1:500) The optimal working dilution should be determined by the end user.
<b>Storage Buffer</b>	In PBS, pH 7.2 (40% glycerol, 0.02% sodium azide)

**Storage Instruction**

Store at 4°C. For long term storage store at -20°C.  
Aliquot to avoid repeated freezing and thawing.

**Note**

This product contains sodium azide: a POISONOUS AND HAZARDOUS SUBSTANCE which should be handled by trained staff only.

## Applications

- Western Blot
- Immunohistochemistry (Formalin/PFA-fixed paraffin-embedded sections)

Immunohistochemical staining of human pancreas with MANSC1 polyclonal antibody (Cat # PAB20401) shows strong cytoplasmic positivity with granular pattern in exocrine glandular cells at 1:20-1:50 dilution.

## Gene Info — MANSC1

**Entrez GeneID**[54682](#)**Protein Accession#**[Q9H8J5](#)**Gene Name**

MANSC1

**Gene Alias**

9130403P13Rik, FLJ10298, LOH12CR3

**Gene Description**

MANSC domain containing 1

**Gene Ontology**[Hyperlink](#)**Other Designations**

-