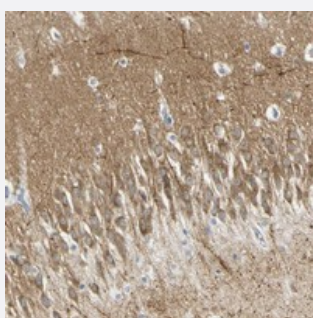


# MAGI3 polyclonal antibody

Catalog # PAB20398      Size 100 uL

## Applications



### Immunohistochemistry (Formalin/PFA-fixed paraffin-embedded sections)

Immunohistochemical staining of human hippocampus with MAGI3 polyclonal antibody (Cat # PAB20398) shows moderate cytoplasmic positivity in neuronal cells and neuropil at 1:20-1:50 dilution.

## Specification

Product Description	Rabbit polyclonal antibody raised against recombinant MAGI3.
Immunogen	Recombinant protein corresponding to amino acids of human MAGI3.
Sequence	LKVGDHISAVNGQSMELSHDNIVQLIKDAGVTVTLTVIAEEHHGPPSGTNSARQSPALQHRPMG QSQANHIPGDRSALEGEIGKDVSTSYRHSWSDHKHLAQPDAVISVVGSRHNQNLGCYPVELER GPRGFGFSLRG
Host	Rabbit
Reactivity	Human
Form	Liquid
Purification	Antigen affinity purification
Isotype	IgG
Recommend Usage	Immunohistochemistry (1:20-1:50) The optimal working dilution should be determined by the end user.
Storage Buffer	In PBS, pH 7.2 (40% glycerol, 0.02% sodium azide)

**Storage Instruction**

Store at 4°C. For long term storage store at -20°C.  
Aliquot to avoid repeated freezing and thawing.

**Note**

This product contains sodium azide: a POISONOUS AND HAZARDOUS SUBSTANCE which should be handled by trained staff only.

## Applications

- Immunohistochemistry (Formalin/PFA-fixed paraffin-embedded sections)

Immunohistochemical staining of human hippocampus with MAGI3 polyclonal antibody (Cat # PAB20398) shows moderate cytoplasmic positivity in neuronal cells and neuropil at 1:20-1:50 dilution.

## Gene Info — MAGI3

**Entrez GeneID** [260425](#)

**Protein Accession#** [Q5TCQ9](#)

**Gene Name** MAGI3

**Gene Alias** MAGI-3, MGC163281, RP4-730K3.1, dJ730K3.2

**Gene Description** membrane associated guanylate kinase, WW and PDZ domain containing 3

**Gene Ontology** [Hyperlink](#)

**Gene Summary** O

**Other Designations** OTTHUMP00000013454|OTTHUMP00000013456|membrane-associated guanylate kinase-related 3

## Pathway

- [Tight junction](#)

## Disease

- [Tobacco Use Disorder](#)