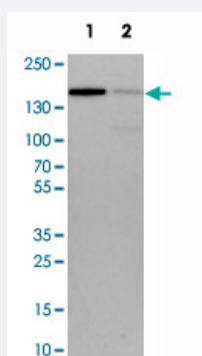


CCAR1 polyclonal antibody

Catalog # PAB20392 Size 100 uL

Applications

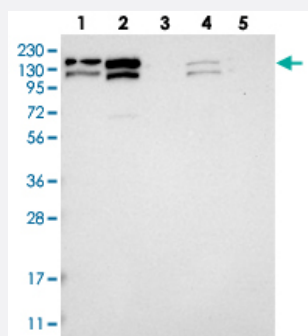


Western Blot (Cell lysate)

Western blot analysis of cell lysates with CCAR1 polyclonal antibody (Cat # PAB20392).

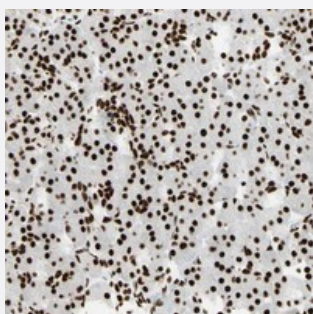
Lane 1 : NIH/3T3

Lane 2 : NBT-II



Western Blot

Western blot analysis of Lane 1: RT-4, Lane 2: U-251 MG, Lane 3: Human Plasma, Lane 4: Liver, Lane 5: Tonsil with CCAR1 polyclonal antibody (Cat # PAB20392).



Immunohistochemistry (Formalin/PFA-fixed paraffin-embedded sections)

Immunohistochemical staining of human pancreas with CCAR1 polyclonal antibody (Cat # PAB20392) shows strong nuclear positivity in exocrine glandular cells.

Specification

Product Description

Rabbit polyclonal antibody raised against recombinant CCAR1.

Immunogen	Recombinant protein corresponding to amino acids of human CCAR1.
Sequence	KDVEENVGLIVNGAMVDVGSLLQKLEKSEKVRAEVEQKLQLLEEKTDDEDEKTLNLENSNKSLS GELREVKKDLSQLQENLKISENMNLQFENQMKNKTIRNLSTVMDEIHTVLKKDENVKNED
Host	Rabbit
Reactivity	Human, Mouse, Rat
Form	Liquid
Purification	Antigen affinity purification
Isotype	IgG
Recommend Usage	Immunohistochemistry (1:200-1:500) Western Blot (1:250-1:500) The optimal working dilution should be determined by the end user.
Storage Buffer	In PBS, pH 7.2 (40% glycerol, 0.02% sodium azide)
Storage Instruction	Store at 4°C. For long term storage store at -20°C. Aliquot to avoid repeated freezing and thawing.
Note	This product contains sodium azide: a POISONOUS AND HAZARDOUS SUBSTANCE which should be handled by trained staff only.

Applications

- Western Blot (Cell lysate)

Western blot analysis of cell lysates with CCAR1 polyclonal antibody (Cat # PAB20392).

Lane 1 : NIH/3T3

Lane 2 : NBT-II

- Western Blot

Western blot analysis of Lane 1: RT-4, Lane 2: U-251 MG, Lane 3: Human Plasma, Lane 4: Liver, Lane 5: Tonsil with CCAR1 polyclonal antibody (Cat # PAB20392).

- Immunohistochemistry (Formalin/PFA-fixed paraffin-embedded sections)

Immunohistochemical staining of human pancreas with CCAR1 polyclonal antibody (Cat # PAB20392) shows strong nuclear positivity in exocrine glandular cells.

Gene Info — CCAR1

Entrez GeneID

[55749](#)

Protein Accession#	Q8IX12
Gene Name	CCAR1
Gene Alias	CARP-1, CARP1, MGC44628, RP11-437A18.1
Gene Description	cell division cycle and apoptosis regulator 1
Gene Ontology	Hyperlink
Other Designations	OTTHUMP00000019709 cell-cycle and apoptosis regulatory protein 1

Disease

- [Alzheimer Disease](#)
- [Genetic Predisposition to Disease](#)