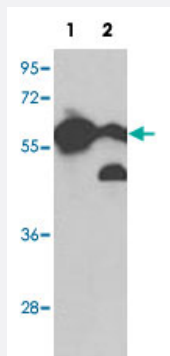


PKM2 polyclonal antibody

Catalog # PAB2038

Size 400 uL

Applications



Western Blot

Western blot analysis of PKM2 polyclonal antibody (Cat # PAB2038) in A2058 cell line (Lane 1) and mouse brain tissue lysates (Lane 2)(35 ug/lane).

Specification

Product Description	Rabbit polyclonal antibody raised against synthetic peptide of PKM2.
Immunogen	A synthetic peptide (conjugated with KLH) corresponding to amino acids 476-505 of human PKM2.
Host	Rabbit
Reactivity	Human, Mouse
Form	Liquid
Purification	Protein G purification
Recommend Usage	ELISA Immunohistochemistry (1:50~1:100) Immunofluorescence (1:200) Western Blot (1:2000) The optimal working dilution should be determined by the end user.
Storage Buffer	In PBS (0.09% sodium azide).
Storage Instruction	Store at 4°C. For long term storage store at -20°C. Aliquot to avoid repeated freezing and thawing.

Note

This product contains sodium azide: a POISONOUS AND HAZARDOUS SUBSTANCE which should be handled by trained staff only.

Applications

- Western Blot

Western blot analysis of PKM2 polyclonal antibody (Cat # PAB2038) in A2058 cell line (Lane 1) and mouse brain tissue lysates (Lane 2)(35 ug/lane).

- Immunohistochemistry

- Immunofluorescence

- Enzyme-linked Immunoabsorbent Assay

Gene Info — PKM2

Entrez GeneID	5315
---------------	----------------------

Protein Accession#	P14618
--------------------	------------------------

Gene Name	PKM2
-----------	------

Gene Alias	CTHBP, MGC3932, OIP3, PK3, PKM, TCB, THBP1
------------	--

Gene Description	pyruvate kinase, muscle
------------------	-------------------------

Omim ID	179050
---------	------------------------

Gene Ontology	Hyperlink
---------------	---------------------------

Gene Summary	<p>This gene encodes a protein involved in glycolysis. The encoded protein is a pyruvate kinase that catalyzes the transfer of a phosphoryl group from phosphoenolpyruvate to ADP, generating ATP and pyruvate. This protein has been shown to interact with thyroid hormone and may mediate cellular metabolic effects induced by thyroid hormones. This protein has been found to bind Opa protein, a bacterial outer membrane protein involved in gonococcal adherence to and invasion of human cells, suggesting a role of this protein in bacterial pathogenesis. Three alternatively spliced transcript variants encoding two distinct isoforms have been reported. [provided by RefSeq]</p>
--------------	--

Other Designations	OPA-interacting protein 3 PK, muscle type pyruvate kinase M2 thyroid hormone-binding protein, cytosolic
--------------------	---

Publication Reference

- [A protein interaction framework for human mRNA degradation.](#)

Lehner B, Sanderson CM.

Genome Research 2004 Jul; 14(7):1315.

- [Exploring proteomes and analyzing protein processing by mass spectrometric identification of sorted N-terminal peptides.](#)

Gevaert K, Goethals M, Martens L, Van Damme J, Staes A, Thomas GR, Vandekerckhove J.

Nature Biotechnology 2003 Mar; 21(5):566.

- [Structure and function of human erythrocyte pyruvate kinase. Molecular basis of nonspherocytic hemolytic anemia.](#)

Valentini G, Chiarelli LR, Fortin R, Dolzan M, Galizzi A, Abraham DJ, Wang C, Bianchi P, Zanella A, Mattevi A.

The Journal of Biological Chemistry 2002 Jun; 277(26):23807.

Pathway

- [Biosynthesis of alkaloids derived from histidine and purine](#)
- [Biosynthesis of alkaloids derived from ornithine](#)
- [Biosynthesis of alkaloids derived from shikimate pathway](#)
- [Biosynthesis of alkaloids derived from terpenoid and polyketide](#)
- [Biosynthesis of phenylpropanoids](#)
- [Biosynthesis of plant hormones](#)
- [Biosynthesis of terpenoids and steroids](#)
- [Carbon fixation in photosynthetic organisms](#)
- [Glycolysis / Gluconeogenesis](#)
- [Metabolic pathways](#)
- [Purine metabolism](#)
- [Pyruvate metabolism](#)

- [Type II diabetes mellitus](#)

Disease

- [Drug Toxicity](#)
- [Edema](#)
- [Hypercholesterolemia](#)