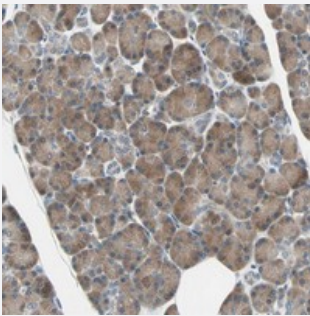


C6orf162 polyclonal antibody

Catalog # PAB20377 Size 100 uL

Applications



Immunohistochemistry (Formalin/PFA-fixed paraffin-embedded sections)

Immunohistochemical staining of human pancreas with C6orf162 polyclonal antibody (Cat # PAB20377) shows moderate cytoplasmic positivity in exocrine glandular cells.

Specification

Product Description	Rabbit polyclonal antibody raised against recombinant C6orf162.
Immunogen	Recombinant protein corresponding to amino acids of human C6orf162.
Sequence	MSSAPEPPTFKKEPPKEKEFQSPGLRGVRTTTLFRAVNPELFIKPNKP
Host	Rabbit
Reactivity	Human
Form	Liquid
Purification	Antigen affinity purification
Isotype	IgG
Recommend Usage	Immunohistochemistry (1:10-1:20) The optimal working dilution should be determined by the end user.
Storage Buffer	In PBS, pH 7.2 (40% glycerol, 0.02% sodium azide)
Storage Instruction	Store at 4°C. For long term storage store at -20°C. Aliquot to avoid repeated freezing and thawing.

Note

This product contains sodium azide: a POISONOUS AND HAZARDOUS SUBSTANCE which should be handled by trained staff only.

Applications

- Immunohistochemistry (Formalin/PFA-fixed paraffin-embedded sections)

Immunohistochemical staining of human pancreas with C6orf162 polyclonal antibody (Cat # PAB20377) shows moderate cytoplasmic positivity in exocrine glandular cells.

Gene Info — C6orf162

Entrez GeneID	57150
---------------	-----------------------

Protein Accession#	Q96KF7
--------------------	------------------------

Gene Name	C6orf162
-----------	----------

Gene Alias	DKFZp586E1923, dJ102H19.2
------------	---------------------------

Gene Description	chromosome 6 open reading frame 162
------------------	-------------------------------------

Gene Ontology	Hyperlink
---------------	---------------------------

Other Designations	OTTHUMP00000016828 hypothetical protein LOC57150
--------------------	--