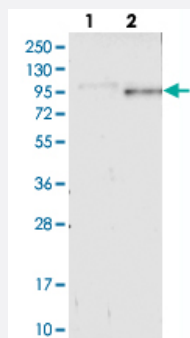


GPSM2 polyclonal antibody

Catalog # PAB20374

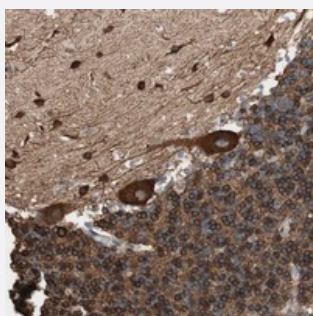
Size 100 uL

Applications



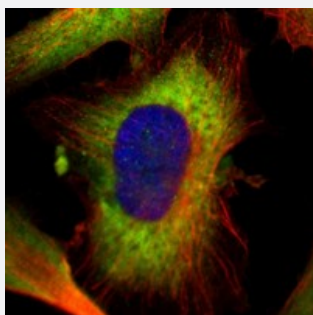
Western Blot (Transfected lysate)

Western blot analysis of Lane 1: Negative control (vector only transfected HEK293T lysate), Lane 2: Over-expression Lysate (Co-expressed with a C-terminal myc-DDK tag (~3.1 kDa) in mammalian HEK293T cells with GPSM2 polyclonal antibody (Cat # PAB20374) at 1:250-1:500 dilution.



Immunohistochemistry (Formalin/PFA-fixed paraffin-embedded sections)

Immunohistochemical staining of human cerebellum with GPSM2 polyclonal antibody (Cat # PAB20374) shows strong cytoplasmic positivity in Purkinje cells in molecular layer and granular layer at 1:500-1:1000 dilution.



Immunofluorescence

Immunofluorescent staining of human cell line U-251 MG with GPSM2 polyclonal antibody (Cat # PAB20374) at 1-4 ug/mL dilution shows positivity in cytoplasm.

Specification

Product Description

Rabbit polyclonal antibody raised against recombinant GPSM2.

Immunogen

Recombinant protein corresponding to amino acids of human GPSM2.

Sequence	REVGDKSGELTARLNLSDLQMVGLSYSTNNSIMSENTEIDSSLNGVRPKLGRRHSMENMELMKL TPEKVQNWNSEILAKQKPLIAKPSAKLLFVNRLKGKKYKTNSSTKVLQDASNSIDHRIPNSQRKISA DTIGDEGFFDL
Host	Rabbit
Reactivity	Human
Form	Liquid
Purification	Antigen affinity purification
Isotype	IgG
Recommend Usage	Immunohistochemistry (1:500-1:1000) Western Blot (1:250-1:500) Immunofluorescence (1-4 ug/mL) The optimal working dilution should be determined by the end user.
Storage Buffer	In PBS, pH 7.2 (40% glycerol, 0.02% sodium azide)
Storage Instruction	Store at 4°C. For long term storage store at -20°C. Aliquot to avoid repeated freezing and thawing.
Note	This product contains sodium azide: a POISONOUS AND HAZARDOUS SUBSTANCE which should be handled by trained staff only.

Applications

- Western Blot (Transfected lysate)

Western blot analysis of Lane 1: Negative control (vector only transfected HEK293T lysate), Lane 2: Over-expression Lysate (Co-expressed with a C-terminal myc-DDK tag (~3.1 kDa) in mammalian HEK293T cells with GPSM2 polyclonal antibody (Cat # PAB20374) at 1:250-1:500 dilution.

- Immunohistochemistry (Formalin/PFA-fixed paraffin-embedded sections)

Immunohistochemical staining of human cerebellum with GPSM2 polyclonal antibody (Cat # PAB20374) shows strong cytoplasmic positivity in Purkinje cells in molecular layer and granular layer at 1:500-1:1000 dilution.

- Immunofluorescence

Immunofluorescent staining of human cell line U-251 MG with GPSM2 polyclonal antibody (Cat # PAB20374) at 1-4 ug/mL dilution shows positivity in cytoplasm.

Gene Info — GPSM2

Entrez GeneID

[29899](#)

Protein Accession#	P81274
Gene Name	GPSM2
Gene Alias	LGN, Pins
Gene Description	G-protein signaling modulator 2 (AGS3-like, C. elegans)
Omim ID	609245
Gene Ontology	Hyperlink
Gene Summary	Heterotrimeric G proteins transduce extracellular signals received by cell surface receptors into integrated cellular responses. GPSM2 belongs to a group of proteins that modulate activation of G proteins (Blumer et al., 2002 [PubMed 11832491]).[supplied by OMIM]
Other Designations	G-protein signalling modulator 2 (AGS3-like, C. elegans) LGN protein

Disease

- [Adenocarcinoma](#)
- [Genetic Predisposition to Disease](#)
- [Pancreatic Neoplasms](#)