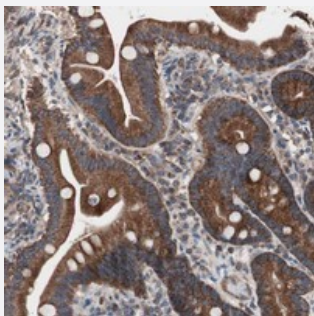


# CTTNBP2NL polyclonal antibody

Catalog # PAB20371

Size 100 uL

## Applications



### Immunohistochemistry (Formalin/PFA-fixed paraffin-embedded sections)

Immunohistochemical staining of human duodenum with CTTNBP2NL polyclonal antibody (Cat # PAB20371) shows strong cytoplasmic positivity in glandular cells.

## Specification

Product Description	Rabbit polyclonal antibody raised against recombinant CTTNBP2NL.
Immunogen	Recombinant protein corresponding to amino acids of human CTTNBP2NL.
Sequence	NPLSILKVVMKQCKNMQERMLSQLAAAESRHRKVILDLEERQRHAQDTAEGDDVTYMLEKERE RLTQQLEFEKSQVKKFEKEQKKLSSQLEEERSRHKQLSSMLVLECKKATNKAAEEGQKAGELSL KLEKEKSRVSKLEEELAAERKR
Host	Rabbit
Reactivity	Human
Form	Liquid
Purification	Antigen affinity purification
Isotype	IgG
Recommend Usage	Immunohistochemistry (1:200-1:500) The optimal working dilution should be determined by the end user.
Storage Buffer	In PBS, pH 7.2 (40% glycerol, 0.02% sodium azide)

**Storage Instruction**

Store at 4°C. For long term storage store at -20°C.  
Aliquot to avoid repeated freezing and thawing.

**Note**

This product contains sodium azide: a POISONOUS AND HAZARDOUS SUBSTANCE which should be handled by trained staff only.

## Applications

- Immunohistochemistry (Formalin/PFA-fixed paraffin-embedded sections)

Immunohistochemical staining of human duodenum with CTTNBP2NL polyclonal antibody (Cat # PAB20371) shows strong cytoplasmic positivity in glandular cells.

## Gene Info — CTTNBP2NL

**Entrez GeneID**[55917](#)**Protein Accession#**[Q9P2B4](#)**Gene Name**

CTTNBP2NL

**Gene Alias**

DKFZp547A023, FLJ13278

**Gene Description**

CTTNBP2 N-terminal like

**Gene Ontology**[Hyperlink](#)**Other Designations**

OTTHUMP00000012854