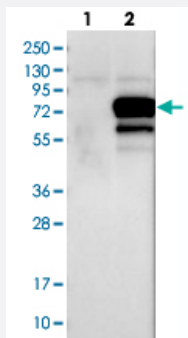


# GRHL1 polyclonal antibody

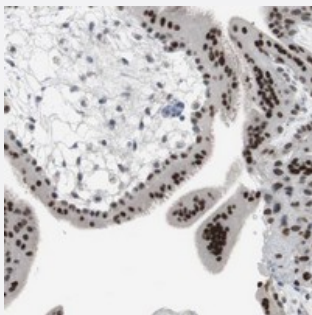
Catalog # PAB20348      Size 100 uL

## Applications



### Western Blot (Transfected lysate)

Western blot analysis of Lane 1: Negative control (vector only transfected HEK293T lysate), Lane 2: Over-expression Lysate (Co-expressed with a C-terminal myc-DDK tag (~3.1 kDa) in mammalian HEK293T cells with GRHL1 polyclonal antibody (Cat # PAB20348) at 1:250-1:500 dilution.



### Immunohistochemistry (Formalin/PFA-fixed paraffin-embedded sections)

Immunohistochemical staining of human placenta with GRHL1 polyclonal antibody (Cat # PAB20348) shows strong nuclear positivity in trophoblastic cells at 1:50-1:200 dilution.

## Specification

<b>Product Description</b>	Rabbit polyclonal antibody raised against recombinant GRHL1.
<b>Immunogen</b>	Recombinant protein corresponding to amino acids of human GRHL1.
<b>Sequence</b>	VTVSIATMPTHSIKTETQPHGFAVGIPPAVYHPEPTERVVVFDRLNTDQFSSGAQAPNAQRRTPD STFSETFKEGVQEVFFPSDLSLRMPGMNSEDYVFDVSGNNFEYTLASKSLRQKPGDSTMTYL NK
<b>Host</b>	Rabbit
<b>Reactivity</b>	Human
<b>Form</b>	Liquid

Purification	Antigen affinity purification
Isotype	IgG
Recommend Usage	Immunohistochemistry (1:50-1:200) Western Blot (1:250-1:500) The optimal working dilution should be determined by the end user.
Storage Buffer	In PBS, pH 7.2 (40% glycerol, 0.02% sodium azide)
Storage Instruction	Store at 4°C. For long term storage store at -20°C. Aliquot to avoid repeated freezing and thawing.
Note	This product contains sodium azide: a POISONOUS AND HAZARDOUS SUBSTANCE which should be handled by trained staff only.

## Applications

- Western Blot (Transfected lysate)

Western blot analysis of Lane 1: Negative control (vector only transfected HEK293T lysate), Lane 2: Over-expression Lysate (Co-expressed with a C-terminal myc-DDK tag (~3.1 kDa) in mammalian HEK293T cells with GRHL1 polyclonal antibody (Cat # PAB20348) at 1:250-1:500 dilution.

- Immunohistochemistry (Formalin/PFA-fixed paraffin-embedded sections)

Immunohistochemical staining of human placenta with GRHL1 polyclonal antibody (Cat # PAB20348) shows strong nuclear positivity in trophoblastic cells at 1:50-1:200 dilution.

## Gene Info — GRHL1

Entrez GeneID	<a href="#">29841</a>
Protein Accession#	<a href="#">Q9NZI5</a>
Gene Name	GRHL1
Gene Alias	LBP-32, LBP32, MGR, TFCEP2L2
Gene Description	grainyhead-like 1 (Drosophila)
Omim ID	<a href="#">609786</a>
Gene Ontology	<a href="#">Hyperlink</a>

**Gene Summary**

This gene encodes a member of the grainyhead family of transcription factors. The encoded protein can exist as a homodimer or can form heterodimers with sister-of-mammalian grainyhead or brother-of-mammalian grainyhead. This protein functions as a transcription factor during development. [provided by RefSeq]

**Other Designations**

LBP protein 32|leader-binding protein 32|mammalian grainyhead|transcription factor CP2-like 2