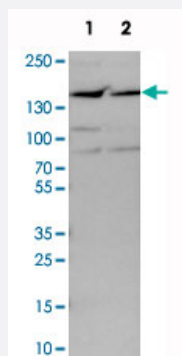


PPP1R13B polyclonal antibody

Catalog # PAB20346 Size 100 uL

Applications

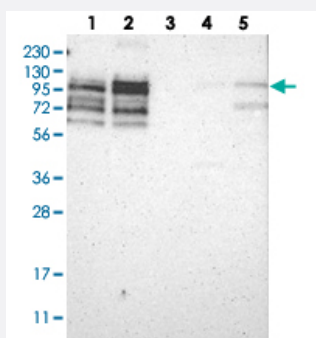


Western Blot (Cell lysate)

Western blot analysis of cell lysates with PPP1R13B polyclonal antibody (Cat # PAB20346) at 1:250-1:500 dilution.

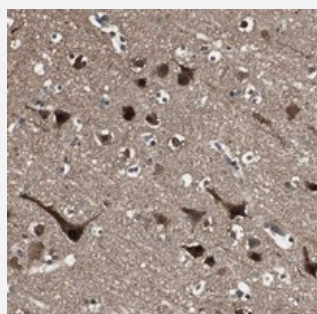
Lane 1 : NIH/3T3

Lane 2 : NBT-II



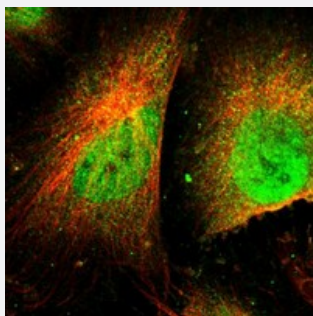
Western Blot

Western blot analysis of Lane 1: RT-4, Lane 2: U-251 MG, Lane 3: Human Plasma, Lane 4: Liver, Lane 5: Tonsil with PPP1R13B polyclonal antibody (Cat # PAB20346) at 1:250-1:500 dilution.



Immunohistochemistry (Formalin/PFA-fixed paraffin-embedded sections)

Immunohistochemical staining of human cerebral cortex with PPP1R13B polyclonal antibody (Cat # PAB20346) shows strong nuclear and cytoplasmic positivity in neuronal cells, glial cells displayed nuclear staining.



Immunofluorescence

Immunofluorescent staining of human cell line U-251 MG with PPP1R13B polyclonal antibody (Cat # PAB20346) at 1-4 ug/mL dilution shows positivity in nucleus but not nucleoli, cytoplasm.

Specification

Product Description	Rabbit polyclonal antibody raised against recombinant PPP1R13B.
Immunogen	Recombinant protein corresponding to amino acids of human PPP1R13B.
Sequence	PNIQKLLYQRFNTLAGGMEGTPFYQSPSQDFMGLADVDNGNTNANGNLEELPPAQPTAPLPA EPAPSSDANDNELPSPEPEELICPQTHQTAEPaedNNNNVATVPtTEQIPSPVAEAPSPGEEQV PPAPLPPASHPPATSTNK
Host	Rabbit
Reactivity	Human, Mouse, Rat
Form	Liquid
Purification	Antigen affinity purification
Isotype	IgG
Recommend Usage	Western Blot (1:250-1:500) Immunofluorescence (1-4 ug/mL) The optimal working dilution should be determined by the end user.
Storage Buffer	In PBS, pH 7.2 (40% glycerol, 0.02% sodium azide)
Storage Instruction	Store at 4°C. For long term storage store at -20°C. Aliquot to avoid repeated freezing and thawing.
Note	This product contains sodium azide: a POISONOUS AND HAZARDOUS SUBSTANCE which should be handled by trained staff only.

Applications

- Western Blot (Cell lysate)

Western blot analysis of cell lysates with PPP1R13B polyclonal antibody (Cat # PAB20346) at 1:250-1:500 dilution.

Lane 1 : NIH/3T3

Lane 2 : NBT-II

- Western Blot

Western blot analysis of Lane 1: RT-4, Lane 2: U-251 MG, Lane 3: Human Plasma, Lane 4: Liver, Lane 5: Tonsil with PPP1R13B polyclonal antibody (Cat # PAB20346) at 1:250-1:500 dilution.

- Immunohistochemistry (Formalin/PFA-fixed paraffin-embedded sections)

Immunohistochemical staining of human cerebral cortex with PPP1R13B polyclonal antibody (Cat # PAB20346) shows strong nuclear and cytoplasmic positivity in neuronal cells, glial cells displayed nuclear staining.

- Immunofluorescence

Immunofluorescent staining of human cell line U-251 MG with PPP1R13B polyclonal antibody (Cat # PAB20346) at 1-4 ug/mL dilution shows positivity in nucleus but not nucleoli, cytoplasm.

Gene Info — PPP1R13B

Entrez GeneID [23368](#)

Protein Accession# [Q96KQ4](#)

Gene Name PPP1R13B

Gene Alias ASPP1, KIAA0771, p53BP2-like, p85

Gene Description protein phosphatase 1, regulatory (inhibitor) subunit 13B

Omim ID [606455](#)

Gene Ontology [Hyperlink](#)

Gene Summary This gene encodes a member of the ASPP (apoptosis-stimulating protein of p53) family of p53 interacting proteins. The protein contains four ankyrin repeats and an SH3 domain involved in protein-protein interactions. ASPP proteins are required for the induction of apoptosis by p53-family proteins. They promote DNA binding and transactivation of p53-family proteins on the promoters of proapoptotic genes. Expression of this gene is regulated by the E2F transcription factor. [provided by RefSeq]

Other Designations apoptosis-stimulating protein of p53, 1

Disease

- [Melanoma](#)
- [Skin Neoplasms](#)
- [Tobacco Use Disorder](#)