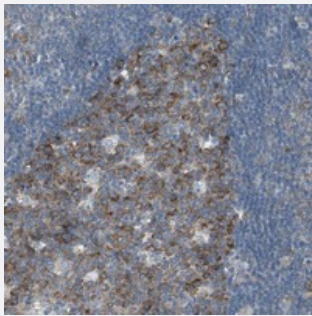


RPS12 polyclonal antibody

Catalog # PAB20339 Size 100 uL

Applications



Immunohistochemistry (Formalin/PFA-fixed paraffin-embedded sections)

Immunohistochemical staining of human lymph node with RPS12 polyclonal antibody (Cat # PAB20339) shows strong cytoplasmic positivity in a subset of reaction center cells at 1:50-1:200 dilution.

Specification

Product Description	Rabbit polyclonal antibody raised against recombinant RPS12.
Immunogen	Recombinant protein corresponding to amino acids of human RPS12.
Sequence	AAGGVMDEVNTALQEVLKTALHDGLARGIREAAKALDKRQAHLCVLASNCDEPMYVKLVEALCAE HQINLIKVDNDKKLGEWVGLCKIDREGKPRKVVGCSCVVVKDYGKESQAKDV
Host	Rabbit
Reactivity	Human
Form	Liquid
Purification	Antigen affinity purification
Isotype	IgG
Recommend Usage	Immunohistochemistry (1:50-1:200) The optimal working dilution should be determined by the end user.
Storage Buffer	In PBS, pH 7.2 (40% glycerol, 0.02% sodium azide)

Storage Instruction

Store at 4°C. For long term storage store at -20°C.
Aliquot to avoid repeated freezing and thawing.

Note

This product contains sodium azide: a POISONOUS AND HAZARDOUS SUBSTANCE which should be handled by trained staff only.

Applications

- Immunohistochemistry (Formalin/PFA-fixed paraffin-embedded sections)

Immunohistochemical staining of human lymph node with RPS12 polyclonal antibody (Cat # PAB20339) shows strong cytoplasmic positivity in a subset of reaction center cells at 1:50-1:200 dilution.

Gene Info — RPS12

Entrez GeneID[6206](#)**Protein Accession#**[P25398](#)**Gene Name**

RPS12

Gene Alias

-

Gene Description

ribosomal protein S12

Omim ID[603660](#)**Gene Ontology**[Hyperlink](#)**Gene Summary**

Ribosomes, the organelles that catalyze protein synthesis, consist of a small 40S subunit and a large 60S subunit. Together these subunits are composed of 4 RNA species and approximately 80 structurally distinct proteins. This gene encodes a ribosomal protein that is a component of the 40S subunit. The protein belongs to the S12E family of ribosomal proteins. It is located in the cytoplasm. Increased expression of this gene in colorectal cancers compared to matched normal colonic mucosa has been observed. As is typical for genes encoding ribosomal proteins, there are multiple processed pseudogenes of this gene dispersed through the genome. [provided by RefSeq]

Other Designations

40S ribosomal protein S12|OTTHUMP00000017230

Pathway

- [Ribosome](#)