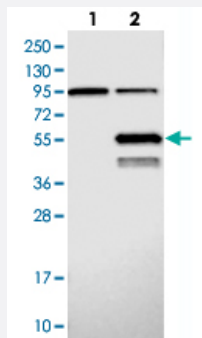


ABHD2 polyclonal antibody

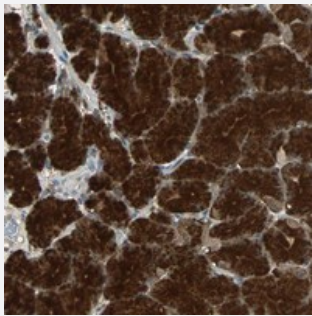
Catalog # PAB20333 Size 100 uL

Applications



Western Blot (Transfected lysate)

Western blot analysis of Lane 1: Negative control (vector only transfected HEK293T lysate), Lane 2: Over-expression Lysate (Co-expressed with a C-terminal myc-DDK tag (~3.1 kDa) in mammalian HEK293T cells with ABHD2 polyclonal antibody (Cat # PAB20333) at 1:250-1:500 dilution.



Immunohistochemistry (Formalin/PFA-fixed paraffin-embedded sections)

Immunohistochemical staining of human stomach with ABHD2 polyclonal antibody (Cat # PAB20333) shows strong cytoplasmic positivity in glandular cells at 1:10-1:20 dilution.

Specification

Product Description	Rabbit polyclonal antibody raised against recombinant ABHD2.
Immunogen	Recombinant protein corresponding to amino acids of human ABHD2.
Sequence	TALYGKMGRVRSPHPYGHRKFITMSDGATSTFDLFEPLAEHCVGDDITMVICPGIANHSEKQYIRTF VDY AQKNGYRCAVLNHLGALPNIELTSPRMFTYGCTWEFGAMVNYIKKTYPLTQLVVVGFSLGGNI VCKYLGETQANQEKVL
Host	Rabbit
Reactivity	Human
Form	Liquid

Purification	Antigen affinity purification
Isotype	IgG
Recommend Usage	Immunohistochemistry (1:10-1:20) Western Blot (1:250-1:500) The optimal working dilution should be determined by the end user.
Storage Buffer	In PBS, pH 7.2 (40% glycerol, 0.02% sodium azide)
Storage Instruction	Store at 4°C. For long term storage store at -20°C. Aliquot to avoid repeated freezing and thawing.
Note	This product contains sodium azide: a POISONOUS AND HAZARDOUS SUBSTANCE which should be handled by trained staff only.

Applications

- Western Blot (Transfected lysate)

Western blot analysis of Lane 1: Negative control (vector only transfected HEK293T lysate), Lane 2: Over-expression Lysate (Co-expressed with a C-terminal myc-DDK tag (~3.1 kDa) in mammalian HEK293T cells with ABHD2 polyclonal antibody (Cat # PAB20333) at 1:250-1:500 dilution.

- Immunohistochemistry (Formalin/PFA-fixed paraffin-embedded sections)

Immunohistochemical staining of human stomach with ABHD2 polyclonal antibody (Cat # PAB20333) shows strong cytoplasmic positivity in glandular cells at 1:10-1:20 dilution.

Gene Info — ABHD2

Entrez GeneID	11057
Protein Accession#	P08910
Gene Name	ABHD2
Gene Alias	HS1-2, LABH2, MGC111112, MGC26249, PHPS1-2
Gene Description	abhydrolase domain containing 2
Gene Ontology	Hyperlink
Gene Summary	This gene encodes a protein containing an alpha/beta hydrolase fold, which is a catalytic domain found in a very wide range of enzymes. The function of this protein has not been determined. Alternative splicing of this gene results in two transcript variants encoding the same protein. [provided by RefSeq]

Other Designations

alpha/beta hydrolase domain containing protein 2||lung alpha/beta hydrolase 2
