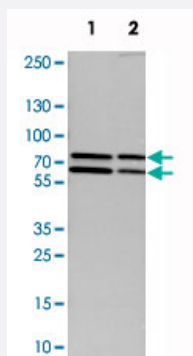


# GRHL1 polyclonal antibody

Catalog # PAB20320      Size 100 uL

## Applications

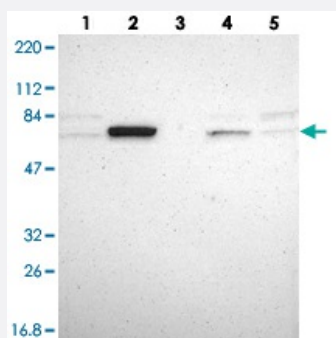


### Western Blot (Cell lysate)

Western blot analysis of cell lysates with GRHL1 polyclonal antibody (Cat # PAB20320) at 1:250-1:500 dilution.

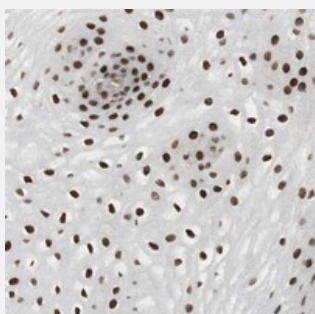
Lane 1 : NIH/3T3

Lane 2 : NBT-II



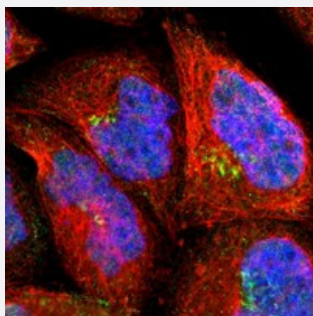
### Western Blot

Western blot analysis of Lane 1: RT-4, Lane 2: U-251 MG, Lane 3: Human Plasma, Lane 4: Liver, Lane 5: Tonsil with GRHL1 polyclonal antibody (Cat # PAB20320) at 1:250-1:500 dilution.



### Immunohistochemistry (Formalin/PFA-fixed paraffin-embedded sections)

Immunohistochemical staining of human esophagus with GRHL1 polyclonal antibody (Cat # PAB20320) shows strong nuclear positivity in squamous epithelial cells at 1:50-1:200 dilution.



## Immunofluorescence

Immunofluorescent staining of human cell line A-431 with GRHL1 polyclonal antibody (Cat # PAB20320) at 1-4 ug/mL dilution shows in nucleus, golgi apparatus.

## Specification

<b>Product Description</b>	Rabbit polyclonal antibody raised against recombinant GRHL1.
<b>Immunogen</b>	Recombinant protein corresponding to amino acids of human GRHL1.
<b>Sequence</b>	TVFKPFIDLDTQPVLFIIPDVHFNALQRGTHVLPASEELEGESVLKRGPGYGTEDDFAVPPSTKLA RIEPPKRVLLYVRKESEEVFDALMLKTPSLKGL
<b>Host</b>	Rabbit
<b>Reactivity</b>	Human, Mouse, Rat
<b>Form</b>	Liquid
<b>Purification</b>	Antigen affinity purification
<b>Isotype</b>	IgG
<b>Recommend Usage</b>	Immunohistochemistry (1:50-1:200) Western Blot (1:250-1:500) Immunofluorescence (1-4 ug/mL) The optimal working dilution should be determined by the end user.
<b>Storage Buffer</b>	In PBS, pH 7.2 (40% glycerol, 0.02% sodium azide)
<b>Storage Instruction</b>	Store at 4°C. For long term storage store at -20°C. Aliquot to avoid repeated freezing and thawing.
<b>Note</b>	This product contains sodium azide: a POISONOUS AND HAZARDOUS SUBSTANCE which should be handled by trained staff only.

## Applications

- Western Blot (Cell lysate)

Western blot analysis of cell lysates with GRHL1 polyclonal antibody (Cat # PAB20320) at 1:250-1:500 dilution.

Lane 1 : NIH/3T3

Lane 2 : NBT-II

- Western Blot

Western blot analysis of Lane 1: RT-4, Lane 2: U-251 MG, Lane 3: Human Plasma, Lane 4: Liver, Lane 5: Tonsil with GRHL1 polyclonal antibody (Cat # PAB20320) at 1:250-1:500 dilution.

- Immunohistochemistry (Formalin/PFA-fixed paraffin-embedded sections)

Immunohistochemical staining of human esophagus with GRHL1 polyclonal antibody (Cat # PAB20320) shows strong nuclear positivity in squamous epithelial cells at 1:50-1:200 dilution.

- Immunofluorescence

Immunofluorescent staining of human cell line A-431 with GRHL1 polyclonal antibody (Cat # PAB20320) at 1-4 ug/mL dilution shows in nucleus, golgi apparatus.

## Gene Info — GRHL1

**Entrez GeneID** [29841](#)

**Protein Accession#** [Q9NZI5](#)

**Gene Name** GRHL1

**Gene Alias** LBP-32, LBP32, MGR, TF2P2L2

**Gene Description** grainyhead-like 1 (Drosophila)

**Omim ID** [609786](#)

**Gene Ontology** [Hyperlink](#)

**Gene Summary** This gene encodes a member of the grainyhead family of transcription factors. The encoded protein can exist as a homodimer or can form heterodimers with sister-of-mammalian grainyhead or brother-of-mammalian grainyhead. This protein functions as a transcription factor during development. [provided by RefSeq]

**Other Designations** LBP protein 32|leader-binding protein 32|mammalian grainyhead|transcription factor CP2-like 2