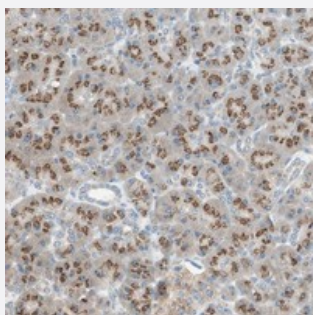


SEC16A polyclonal antibody

Catalog # PAB20311 Size 100 uL

Applications



Immunohistochemistry (Formalin/PFA-fixed paraffin-embedded sections)

Immunohistochemical staining of human pancreas with SEC16A polyclonal antibody (Cat # PAB20311) shows cytoplasmic positivity with a granular pattern in exocrine glandular cells at 1:20-1:50 dilution.

Specification

Product Description	Rabbit polyclonal antibody raised against recombinant SEC16A.
Immunogen	Recombinant protein corresponding to amino acids of human SEC16A.
Sequence	PLPIPSNLFVPTPDAAEEPQLPDGTGREGPAAARGLANPEPAPEPKAPGDLPAAGGPPSGAMPFY NPAQ
Host	Rabbit
Reactivity	Human
Form	Liquid
Purification	Antigen affinity purification
Isotype	IgG
Recommend Usage	Immunohistochemistry (1:20-1:50) The optimal working dilution should be determined by the end user.
Storage Buffer	In PBS, pH 7.2 (40% glycerol, 0.02% sodium azide)

Storage Instruction

Store at 4°C. For long term storage store at -20°C.
Aliquot to avoid repeated freezing and thawing.

Note

This product contains sodium azide: a POISONOUS AND HAZARDOUS SUBSTANCE which should be handled by trained staff only.

Applications

- Immunohistochemistry (Formalin/PFA-fixed paraffin-embedded sections)

Immunohistochemical staining of human pancreas with SEC16A polyclonal antibody (Cat # PAB20311) shows cytoplasmic positivity with a granular pattern in exocrine glandular cells at 1:20-1:50 dilution.

Gene Info — SEC16A

Entrez GeneID[9919](#)**Protein Accession#**[O15027](#)**Gene Name**

SEC16A

Gene Alias

FLJ26737, KIAA0310, RP11-413M3.10, SEC16L, p250

Gene Description

SEC16 homolog A (S. cerevisiae)

Gene Ontology[Hyperlink](#)**Gene Summary**

The selective export of proteins and lipids from the endoplasmic reticulum (ER) is mediated by the coat protein complex II (COPII) that assembles at discrete sites on the membrane known as endoplasmic reticulum exit sites (ERES), or transitional ER sites. SEC16A is a peripheral membrane protein that defines ERES in mammalian cells and is required for protein transport from ER to Golgi (Watson et al., 2006 [PubMed 17005010]).

Other Designations

SEC16 homolog A