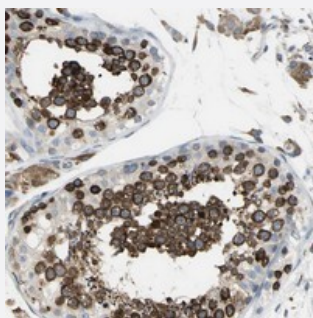


SDF2L1 polyclonal antibody

Catalog # PAB20306 Size 100 uL

Applications



Immunohistochemistry (Formalin/PFA-fixed paraffin-embedded sections)

Immunohistochemical staining of human testis with SDF2L1 polyclonal antibody (Cat # PAB20306) shows strong cytoplasmic positivity in cells of seminiferous ducts.

Specification

| | |
|----------------------------|--|
| Product Description | Rabbit polyclonal antibody raised against recombinant SDF2L1. |
| Immunogen | Recombinant protein corresponding to amino acids of human SDF2L1. |
| Sequence | SVLKLLNTHHRVRLHSHDIKYSGSGGQSVTGVEASDDANSYWRIRGGSEGGCPRGSPVRCGQ AVRLTHVLTGKNLHTHHFPSPLSNNQEVSAFGEDGEGDDLDLWTVRCSGQHWEREAAVRFQHV GTSVFLSVTGEQYGSPIRGQHEVHGMP SANTHNTWKAMEGIFIKPSVEPSAGHD |
| Host | Rabbit |
| Reactivity | Human |
| Form | Liquid |
| Purification | Antigen affinity purification |
| Isotype | IgG |
| Recommend Usage | Immunohistochemistry (1:200-1:500) The optimal working dilution should be determined by the end user. |
| Storage Buffer | In PBS, pH 7.2 (40% glycerol, 0.02% sodium azide) |

Storage Instruction

Store at 4°C. For long term storage store at -20°C.
Aliquot to avoid repeated freezing and thawing.

Note

This product contains sodium azide: a POISONOUS AND HAZARDOUS SUBSTANCE which should be handled by trained staff only.

Applications

- Immunohistochemistry (Formalin/PFA-fixed paraffin-embedded sections)

Immunohistochemical staining of human testis with SDF2L1 polyclonal antibody (Cat # PAB20306) shows strong cytoplasmic positivity in cells of seminiferous ducts.

Gene Info — SDF2L1

| | |
|--------------------|--|
| Entrez GeneID | 23753 |
| Protein Accession# | Q9HCN8 |
| Gene Name | SDF2L1 |
| Gene Alias | - |
| Gene Description | stromal cell-derived factor 2-like 1 |
| Omim ID | 607551 |
| Gene Ontology | Hyperlink |
| Other Designations | OTTHUMT00000075032 PWP1-interacting protein 8 SDF2-like 1 dihydropyrimidinase-like 2 |