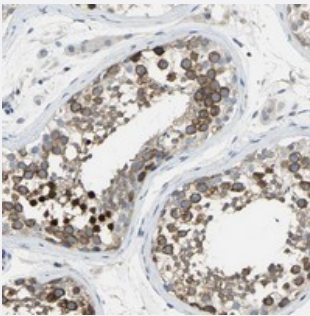


DLGAP5 polyclonal antibody

Catalog # PAB20300 Size 100 uL

Applications



Immunohistochemistry (Formalin/PFA-fixed paraffin-embedded sections)

Immunohistochemical staining of human testis with DLGAP5 polyclonal antibody (Cat # PAB20300) shows strong nuclear and cytoplasmic positivity in cells in seminiferous ducts at 1:200-1:500 dilution.

Specification

Product Description	Rabbit polyclonal antibody raised against recombinant DLGAP5.
Immunogen	Recombinant protein corresponding to amino acids of human DLGAP5.
Sequence	ASRHRKDISTEMIRTKIAHRKSLSQKENRHKEYERNRHFGLKDVNIPTLEGRILVELDETSQGLVPE KTNVKPRAMKTLGDQRKQMLQKYKEEKQLQKLKEQREKAKRGIFKVGRYRPDMPCFLLSNQNA VKAE
Host	Rabbit
Reactivity	Human
Form	Liquid
Purification	Antigen affinity purification
Isotype	IgG
Recommend Usage	Immunohistochemistry (1:200-1:500) The optimal working dilution should be determined by the end user.
Storage Buffer	In PBS, pH 7.2 (40% glycerol, 0.02% sodium azide)

Storage Instruction

Store at 4°C. For long term storage store at -20°C.
Aliquot to avoid repeated freezing and thawing.

Note

This product contains sodium azide: a POISONOUS AND HAZARDOUS SUBSTANCE which should be handled by trained staff only.

Applications

- Immunohistochemistry (Formalin/PFA-fixed paraffin-embedded sections)

Immunohistochemical staining of human testis with DLGAP5 polyclonal antibody (Cat # PAB20300) shows strong nuclear and cytoplasmic positivity in cells in seminiferous ducts at 1:200-1:500 dilution.

Gene Info — DLGAP5

Entrez GeneID[9787](#)**Protein Accession#**[Q15398](#)**Gene Name**

DLGAP5

Gene Alias

DLG1, DLG7, HURP, KIAA0008

Gene Description

discs, large (Drosophila) homolog-associated protein 5

Gene Ontology[Hyperlink](#)**Gene Summary**

O

Other Designations

Drosophila discs large-1 tumor suppressor-like|discs large homolog 7|discs, large homolog 7|hepatoma up-regulated protein