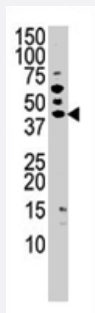


# PANK3 polyclonal antibody

Catalog # PAB2029

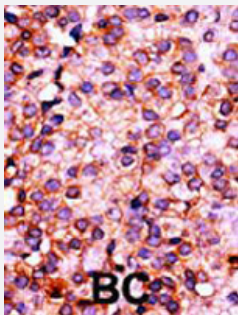
Size 400 uL

## Applications



### Western Blot (Tissue lysate)

Western blot analysis of PANK3 polyclonal antibody (Cat # PAB2029) in mouse liver tissue lysate (35 ug/lane). PANK3 (arrow) was detected using the purified Polyclonal antibody.



### Immunohistochemistry (Formalin/PFA-fixed paraffin-embedded sections)

Formalin-fixed and paraffin-embedded human cancer tissue reacted with PANK3 polyclonal antibody (Cat # PAB2029), which was peroxidase-conjugated to the secondary antibody, followed by AEC staining.

This data demonstrates the use of this antibody for immunohistochemistry ; clinical relevance has not been evaluated. BC = breast carcinoma.

## Specification

Product Description	Rabbit polyclonal antibody raised against synthetic peptide of PANK3.
Immunogen	A synthetic peptide (conjugated with KLH) corresponding to N-terminus of human PANK3.
Host	Rabbit
Reactivity	Human
Form	Liquid
Purification	Protein G purification

<b>Recommend Usage</b>	Western Blot (1:1000) Immunohistochemistry (1:50-100) The optimal working dilution should be determined by the end user.
<b>Storage Buffer</b>	In PBS (0.09% sodium azide)
<b>Storage Instruction</b>	Store at 4°C. For long term storage store at -20°C. Aliquot to avoid repeated freezing and thawing.
<b>Note</b>	This product contains sodium azide: a POISONOUS AND HAZARDOUS SUBSTANCE which should be handled by trained staff only.

## Applications

- Western Blot (Tissue lysate)

Western blot analysis of PANK3 polyclonal antibody (Cat # PAB2029) in mouse liver tissue lysate (35 ug/lane). PANK3 (arrow) was detected using the purified Polyclonal antibody.

- Immunohistochemistry (Formalin/PFA-fixed paraffin-embedded sections)

Formalin-fixed and paraffin-embedded human cancer tissue reacted with PANK3 polyclonal antibody (Cat # PAB2029), which was peroxidase-conjugated to the secondary antibody, followed by AEC staining.

This data demonstrates the use of this antibody for immunohistochemistry; clinical relevance has not been evaluated. BC = breast carcinoma.

## Gene Info — PANK3

<b>Entrez GeneID</b>	<a href="#">79646</a>
<b>Protein Accession#</b>	<a href="#">NP_078870:Q9H999</a>
<b>Gene Name</b>	PANK3
<b>Gene Alias</b>	FLJ12899, MGC16863
<b>Gene Description</b>	pantothenate kinase 3
<b>Omim ID</b>	<a href="#">606161</a>
<b>Gene Ontology</b>	<a href="#">Hyperlink</a>
<b>Gene Summary</b>	This gene encodes a protein belonging to the pantothenate kinase family. Pantothenate kinase is a key regulatory enzyme in the biosynthesis of coenzyme A (CoA) in bacteria and mammalian cells. It catalyzes the first committed step in the universal biosynthetic pathway leading to CoA and is itself subject to regulation through feedback inhibition by CoA. This family member is expressed most abundantly in the liver. [provided by RefSeq]

## Other Designations

pantothenic acid kinase

## Publication Reference

- [A novel pantothenate kinase gene \(PANK2\) is defective in Hallervorden-Spatz syndrome.](#)

Zhou B, Westaway SK, Levinson B, Johnson MA, Gitschier J, Hayflick SJ.

Nature Genetics 2001 Aug; 28(4):345.

## Pathway

- [Metabolic pathways](#)
- [Pantothenate and CoA biosynthesis](#)