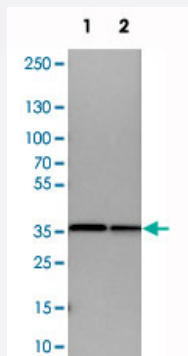


ARPC1B polyclonal antibody

Catalog # PAB20284 Size 100 uL

Applications

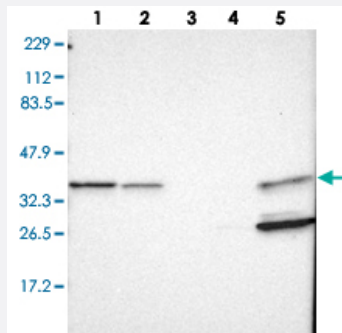


Western Blot (Cell lysate)

Western blot analysis of cell lysates with ARPC1B polyclonal antibody (Cat # PAB20284).

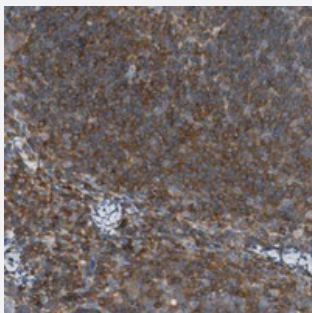
Lane 1 : NIH/3T3

Lane 2 : NBT-II



Western Blot

Western blot analysis of Lane 1: RT-4, Lane 2: U-251 MG, Lane 3: Human Plasma, Lane 4: Liver, Lane 5: Tonsil with ARPC1B polyclonal antibody (Cat # PAB20284).



Immunohistochemistry (Formalin/PFA-fixed paraffin-embedded sections)

Immunohistochemical staining of human lymph node with ARPC1B polyclonal antibody (Cat # PAB20284) shows strong cytoplasmic positivity in lymphoid cells outside reaction centra.

Specification

Product Description

Rabbit polyclonal antibody raised against recombinant ARPC1B.

Immunogen	Recombinant protein corresponding to amino acids of human ARPC1B.
Sequence	TVCLADADKKMAVATLASETLPLLALTFITDNSLVAAGHDCFPVLFTYDAAAGMLSFGGRLDVPK QSSQRGLTARERFQNLDDKKASSEGGTAAGAGLDSLHKNSVSQISVLSGGKAKCSQFCTTGMDG GMSWDVKSLESA
Host	Rabbit
Reactivity	Human, Mouse, Rat
Form	Liquid
Purification	Antigen affinity purification
Isotype	IgG
Recommend Usage	Immunohistochemistry (1:200-1:500) Western Blot (1:250-1:500) The optimal working dilution should be determined by the end user.
Storage Buffer	In PBS, pH 7.2 (40% glycerol, 0.02% sodium azide)
Storage Instruction	Store at 4°C. For long term storage store at -20°C. Aliquot to avoid repeated freezing and thawing.
Note	This product contains sodium azide: a POISONOUS AND HAZARDOUS SUBSTANCE which should be handled by trained staff only.

Applications

- Western Blot (Cell lysate)

Western blot analysis of cell lysates with ARPC1B polyclonal antibody (Cat # PAB20284).

Lane 1 : NIH/3T3

Lane 2 : NBT-II

- Western Blot

Western blot analysis of Lane 1: RT-4, Lane 2: U-251 MG, Lane 3: Human Plasma, Lane 4: Liver, Lane 5: Tonsil with ARPC1B polyclonal antibody (Cat # PAB20284).

- Immunohistochemistry (Formalin/PFA-fixed paraffin-embedded sections)

Immunohistochemical staining of human lymph node with ARPC1B polyclonal antibody (Cat # PAB20284) shows strong cytoplasmic positivity in lymphoid cells outside reaction centra.

Gene Info — ARPC1B

Entrez GeneID	10095
Protein Accession#	O15143
Gene Name	ARPC1B
Gene Alias	ARC41, p40-ARC, p41-ARC
Gene Description	actin related protein 2/3 complex, subunit 1B, 41kDa
Omim ID	604223
Gene Ontology	Hyperlink
Gene Summary	<p>This gene encodes one of seven subunits of the human Arp2/3 protein complex. This subunit is a member of the SOP2 family of proteins and is most similar to the protein encoded by gene ARPC1A. The similarity between these two proteins suggests that they both may function as p41 subunit of the human Arp2/3 complex that has been implicated in the control of actin polymerization in cells. It is possible that the p41 subunit is involved in assembling and maintaining the structure of the Arp2/3 complex. Multiple versions of the p41 subunit may adapt the functions of the complex to different cell types or developmental stages. [provided by RefSeq]</p>
Other Designations	ARP2/3 protein complex subunit p41 actin related protein 2/3 complex subunit 1B actin related protein 2/3 complex, subunit 1A (41 kD) actin related protein 2/3 complex, subunit 1B (41 kD)

Pathway

- [Fc gamma R-mediated phagocytosis](#)
- [Regulation of actin cytoskeleton](#)