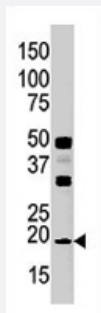


NME3 polyclonal antibody

Catalog # PAB2028

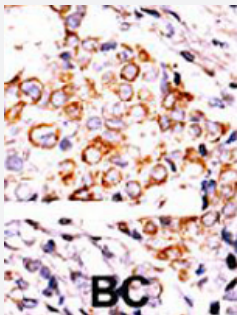
Size 400 uL

Applications



Western Blot (Cell lysate)

Western blot analysis of NME3 polyclonal antibody (Cat # PAB2028) in CEM cell line lysate (35 ug/lane). NME3 (arrow) was detected using the purified Polyclonal antibody.



Immunohistochemistry (Formalin/PFA-fixed paraffin-embedded sections)

Formalin-fixed and paraffin-embedded human cancer tissue reacted with NME3 polyclonal antibody (Cat # PAB2028), which was peroxidase-conjugated to the secondary antibody, followed by DAB staining.

This data demonstrates the use of this antibody for immunohistochemistry; clinical relevance has not been evaluated. BC = breast carcinoma.

Specification

Product Description	Rabbit polyclonal antibody raised against synthetic peptide of NME3.
Immunogen	A synthetic peptide (conjugated with KLH) corresponding to internal region of human NME3.
Host	Rabbit
Reactivity	Human
Form	Liquid
Purification	Protein G purification

Recommend Usage	Western Blot (1:1000) Immunohistochemistry (1:50-100) The optimal working dilution should be determined by the end user.
Storage Buffer	In PBS (0.09% sodium azide)
Storage Instruction	Store at 4°C. For long term storage store at -20°C. Aliquot to avoid repeated freezing and thawing.
Note	This product contains sodium azide: a POISONOUS AND HAZARDOUS SUBSTANCE which should be handled by trained staff only.

Applications

- Western Blot (Cell lysate)

Western blot analysis of NME3 polyclonal antibody (Cat # PAB2028) in CEM cell line lysate (35 ug/lane). NME3 (arrow) was detected using the purified Polyclonal antibody.

- Immunohistochemistry (Formalin/PFA-fixed paraffin-embedded sections)

Formalin-fixed and paraffin-embedded human cancer tissue reacted with NME3 polyclonal antibody (Cat # PAB2028), which was peroxidase-conjugated to the secondary antibody, followed by DAB staining.

This data demonstrates the use of this antibody for immunohistochemistry; clinical relevance has not been evaluated. BC = breast carcinoma.

Gene Info — NME3

Entrez GeneID	4832
Protein Accession#	NP_002504;Q13232
Gene Name	NME3
Gene Alias	DR-nm23, KIAA0516, NDPK-C, NDPKC, NM23-H3, c371H6.2
Gene Description	non-metastatic cells 3, protein expressed in
Omim ID	601817
Gene Ontology	Hyperlink
Gene Summary	O
Other Designations	NDP kinase C nucleoside-diphosphate kinase 3

Publication Reference

- [ELOVL2-AS1 suppresses tamoxifen resistance by sponging miR-1233-3p in breast cancer.](#)

Hyeon Woo Kim, Minjae Baek, Sanghyun Jung, Siyeon Jang, Hyeonjin Lee, Seung-Hoon Yang, Beom Seok Kwak, Sun Jung Kim.

Epigenetics 2023 Dec; 18(1):2276384.

Application: WB, Human, MCF-7 cells

- [Neuroblastoma specific effects of DR-nm23 and its mutant forms on differentiation and apoptosis.](#)

Negróni A, Venturelli D, Tanno B, Amendola R, Ransac S, Cesi V, Calabretta B, Raschella G.

Cell Death and Differentiation 2000 Sep; 7(9):843.

- [Gene structure, promoter activity, and chromosomal location of the DR-nm23 gene, a related member of the nm23 gene family.](#)

Martinez R, Venturelli D, Perrotti D, Veronese ML, Kastury K, Druck T, Huebner K, Calabretta B.

Cancer Research 1997 Mar; 57(6):1180.

- [Overexpression of DR-nm23, a protein encoded by a member of the nm23 gene family, inhibits granulocyte differentiation and induces apoptosis in 32Dc13 myeloid cells.](#)

Venturelli D, Martinez R, Melotti P, Casella I, Peschle C, Cucco C, Spampinato G, Darzynkiewicz Z, Calabretta B.

PNAS 1995 Aug; 92(16):7435.

Application: WB-Ce, WB-Tr, Mouse, 32Dc13 myeloid cells

Pathway

- [Metabolic pathways](#)
- [Purine metabolism](#)
- [Pyrimidine metabolism](#)